

Blossom — Tri-Fold Waterfall Folio Album & Layout



— Tri-Fold Waterfall Folio Album —

Designed by ~ Maria Cole

Graphic 45® Supplies:

1 pk Blossom 12x12 Collection Pack	(4502160)
1 pk Blossom Ephemera & Journaling Cards	(4502164)
1 ea G45 Staples—Tri-Fold Folio Album	(4502222)
1 pk G45 Staples—Antique Metal Door Pulls	(4500548)

Other Supplies: (not included)

1 ea 12x12 sheet Cardstock—Ivory (for the Layout project)

Tools, Adhesives & Ink:

Paper trimmer, scissors, ruler, scoring tools, bone folder, pencil, paper piercer, stamp edge scissors, corner rounder, wet & dry adhesives, foam adhesive, strong glue

Notes:

- All measurements are width x height, unless specified.
- When cutting papers, be mindful of the pattern direction.
- When opening the Collection Pack save cover for step -20

Directions:



1. Find *Inspire* and cut out two vertical tags, "Be at Peace" tag, and four stamps. Then cut purple floral border and trim to 7 $\frac{1}{8}$ " long. Cut blue floral border and trim to 7" long.

3. Locate *Uplift* (b-side) cut one 12" x 4" strip; cut in half so you have two 6" x 4". Round corners. Cut leftover paper into one 7" x 7" and one 5" x 6 $\frac{1}{2}$ ".



2. Cut the following 7" strips: "Blossom Where You Grow" and thin purple borders; green floral and thin blue borders. Save leftover paper for layout project.

Blossom — Tri-Fold Waterfall Folio Album & Layout

Tip: Write the measurements below on the back of smaller paper strips to stay organized.



5. Inside left pocket page: Place wet adhesive behind 7" x 7" *Uplift* paper and insert behind pocket. Insert large ephemera and two vertical tags. Attach large "Blossom" and photo corner stickers. Adhere $\frac{3}{8}$ " x $7\frac{1}{4}$ " *Flourish* strip.



7. Inside right cover: Adhere purple flower border $\frac{1}{8}$ " from the bottom of the cover. Then adhere *Enchant* (b-side) above. Adhere small ephemera, two stamps, and "Be at Peace" tag.



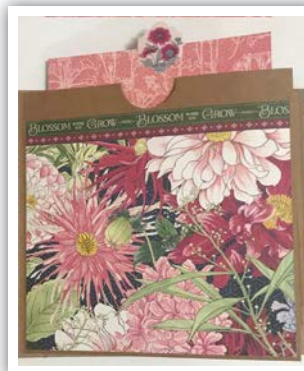
4. Take *Flourish* (b-side) and cut one 12" x $7\frac{1}{4}$ " strip. From this piece, cut one $7\frac{1}{8}$ " x $7\frac{1}{4}$ ", two 1" x $7\frac{1}{4}$ ", one $\frac{7}{8}$ " x $7\frac{1}{4}$ ", one $\frac{1}{2}$ " x $7\frac{1}{4}$ ", and one $\frac{3}{8}$ " x $7\frac{1}{4}$ ". Locate your second sheet of *Flourish* (b-side) and cut one $7\frac{1}{8}$ " x $7\frac{1}{4}$ ".

6. Take *Enchant* (b-side) and cut one $7\frac{1}{8}$ " x $6\frac{5}{8}$ ".

8. Find *Thrive* (b-side) and cut one 6" x 6". Attach sticker on top edge; attach corresponding sticker to the back.



9. Take *Blossom* paper and cut two 7" x $5\frac{5}{8}$ ".



10. Pocket page: Adhere one *Blossom* paper $\frac{1}{8}$ " from the bottom of the cover. Then adhere "Blossom Where You Grow" border above. Repeat this for the back using green floral and thin blue border. Insert 6" x 6" *Thrive* paper into pocket as shown.



11. Locate your second sheet of *Thrive* (b-side) paper and cut three 6" x 4". Round the corners, then add stickers.

Blossom — Tri-Fold Waterfall Folio Album & Layout

• 6" x 4" waterfall •



12. Find the three 6" x 4" ephemera in the photo.

13. Center and adhere ephemera and *Thrive* papers onto pages, alternating between ephemera and *Thrive* designs.



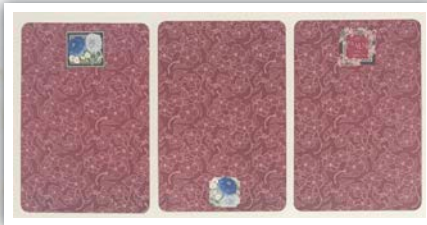
Adhere two stamps, then adhere 1/2" x 7 1/4" *Flourish* strip to the left. Attach sticker onto flap.



14. Adhere 6" x 4" *Uplift* (b-side) underneath the waterfall and add a sticker.

• 4" x 6" waterfall •

15. Find *Delight* (b-side) and cut three 4" x 6". Round the corners, then add stickers.



16. Locate the 4" x 6" ephemera in the photo.

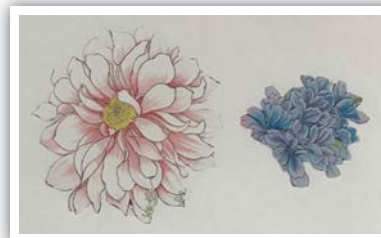


17. Repeat steps 13 - 14 using papers above; attach "Blossom Where You Grow" sticker to the top. Adhere 7/8" x 7 1/4" *Flourish* strip.

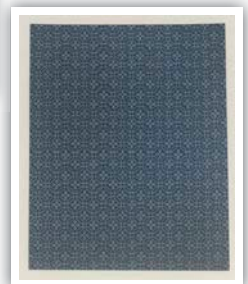


18. Front and back covers: Adhere 7 1/8" x 7 1/4" *Flourish* papers. Adhere 1" x 7 1/4" *Flourish* papers to the sides.

19. From *Brighten* paper trim two 12" x 1" strips off the bottom and save for the layout project. With remaining paper, fussy cut a flower and one leaf.



20. From the Blossom Collection Pack cover, fussy cut two flowers.



21. Find the second sheet of *Inspire* (b-side) and cut one 5 1/2" x 7".

Blossom — Tri-Fold Waterfall Folio Album & Layout



22. Take 7" blue floral border. Place metal door pull in the center; the pull should extend about $\frac{3}{8}$ " past the border. Pierce small holes and insert brads; you can add wet adhesive for a stronger bond.

• Front cover •



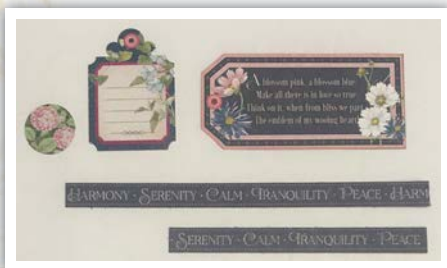
23. Adhere blue floral border $\frac{1}{8}$ " to the edge of the *Flourish* paper. Then adhere *Inspire* and 5" x 6 $\frac{1}{2}$ " *Uplift* and fussy cut flower.



24. Adhere "Blossom" ephemera, blue flower, and leaf. Attach remaining fussy cut flower with foam adhesive, then attach tag and "Serenity" stickers.

• Layout Project •

1. Find leftover *Inspire* paper. Cut out blue tag with quote. Trim "Harmony Serenity Calm" border into one 6 $\frac{3}{4}$ " and one 4 $\frac{3}{4}$ " long pieces. Locate tag and circle stickers.



2. Take *Blossom* and cut one 12" x 4 $\frac{3}{4}$ " strip; from this piece, cut a 6 $\frac{3}{4}$ " x 4 $\frac{3}{4}$ " and a 4 $\frac{3}{4}$ " x 4 $\frac{3}{4}$ ".



3. Find ivory cardstock and cut a 7" x 5" and a 5" x 5". Adhere *Blossom* papers and borders on top.

4. Locate the fussy cut flower and leaf from *Brighten* paper and the two 12" x 1" strips from the previous Step 19.



5. Locate *Delight* (b-side) paper. Adhere remaining *Blossom* paper and *Brighten* (b-side) strips.

6. Adhere photo mats, one large ephemera, two small ephemera, blue tag, and leaf. Attach fussy cut flower and tag sticker with foam adhesive. Attach circle sticker.



OPTIONAL:
Add a metal door pull over "Be calm" ephemera card instead of the circle

sticker. Use a paper pierce to poke small holes through the ephemera. Adhere pull, then insert brads.