

Bird Song – Center-Step Card Set



— Center-Step 3 Card Set —

Designed by ~ Ginger Ropp

Graphic 45® Supplies:

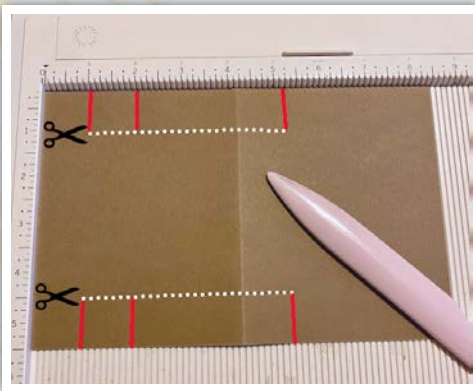
1 ea Bird Song 8x8 Paper Pack	(4501987)
1 ea G45 Architecture Washi Tape—Gold	(4501834)
1 pk G45 Staples Ornate Metal Key Holes	(4500545)
1 pk G45 Card Set & Envelopes—Kraft	(4501990)

Additional Supplies, Tools, Adhesives & Ink:

Paper trimmer or craft knife, scissors, ruler, scoring tool, bone folder, liquid adhesive, double-sided tape, foam adhesive

Notes:

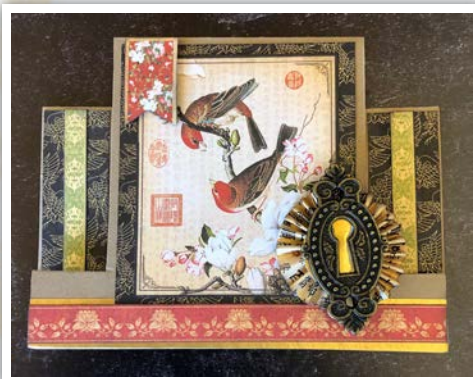
- Measurements are width x height unless specified.
- Optional: Distress paper edges before adhering with black ink.
- For a fun, detailed video tutorial, visit our YouTube page!



1. Unfold a card base and using a craft knife or paper trimmer, make two cuts mirroring each other on the dotted white lines as shown in the image. Do not cut to the edge of the base. Both cuts begin 1" from the left and 1" from the top and bottom, each cut will be 4¼" long, going to the right as shown.

2. Place the card base in your scoreboard and score only on the red lines as shown. Score just down to the cut line, skip the middle section and continue the score mark from the next cut line to the bottom. Score at 1", 2" and 5¼". Fold the score lines: mountain, valley, mountain, then mountain again, as shown.

3. Repeat with two additional card bases.



Card #1

1. From *Longevity* cut a 3¼" x 4¼" panel, and two pieces to at 7/8" x 3".

2. From *Good Fortune* trim at the green floral strip, trim this border strip so you have two pieces that are 3" in length.

3. From *Tranquility* cut apart all of the elements. Trim the red border to 5½" long. Trim the black/gold borders to 5½" long. Trim off one of the stamps. Trim the red floral section off of the 'Bird Song' tag and cut a V-notch into the bottom, creating a flag.

4. From the upper section of *Good Fortune* B-side cut two pieces that are ¾" x 8". Trim these two pieces to 6". Place the pieces into your score board with the 6" across the top and score every ¼". Fold each piece having one piece starting with a mountain fold and the second piece beginning with a valley fold.

5. Using wet glue attach the two pieces together, create one long piece for the rosette element. Use the gold architecture washi tape and cover the remaining remnant of the 'Bird Song' tag element. Cut out a 1" gold circle with either a hole punch or template and trim out one more 1" circle from a scrap.

Bird Song – Center-Step Card Set

6. Attach the ends of the rosette strip together with wet glue. Add wet glue to the scrap circle, scrunch together creating a rosette and adhere it to the top of the circle. Attach the gold circle to the front of the rosette and then place strong adhesive on the back side of the key hole and adhere to the front of the gold circle as shown.
7. Add the black and gold panel to the center panel on the front of the card, then add the bird element on top. Add the smaller strips to the side panels adhering the smaller green strip in the center as shown in the photo. Adhere the red border strip along the bottom, add the rosette to the bottom right hand corner as shown in the photo and add the small red floral banner to the upper left hand corner with foam adhesive.
8. Decorate the inside with the gold washi and other elements. Use the gold washi and add approximately a $\frac{5}{8}$ " border along the bottom of the card, folding the excess to the backside. Note: For additional details on decorating the inside of each card & crafting tips, be sure to watch the video tutorial on the Graphic 45 YouTube channel!



Card #2

1. Trim *Cherry Blossom* to measure $3\frac{1}{4}$ " x 4" and then two pieces from the B-side to measure $\frac{5}{8}$ " x 3".

2. Fussy cut the green lantern from the bottom left hand corner of *Enlightened*. Use the B-side of this paper and trim off a $\frac{5}{8}$ " strip (stripes should be vertical) and then trim to $5\frac{1}{2}$ ". Then trim two more pieces from the B-side to measure $\frac{7}{8}$ " x 3" (stripes should be vertical).

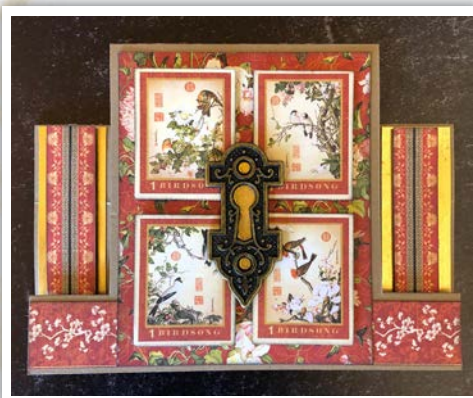
3. Layer the smaller $\frac{5}{8}$ " *Cherry Blossom* strips onto the center of each of the $\frac{7}{8}$ " strips and adhere these panels to the sided panels.

4. Add a small piece of gold washi to the bottom edge of the green lantern. Add gold washi to the bottom edge of the card front (trim off any excess). Add the *Cherry Blossom* panel to the center panel of the

card front. Add the green floral border strip that has been trimmed to $5\frac{1}{2}$ " along the bottom centering it onto the gold washi with foam adhesive. Cut the remaining green floral border in half and adhere to the side panels with foam adhesive (see photo for placement).

5. Fussy cut the upper right hand image from *Shanghai Girls*. Adhere the cut apart element and green lantern with foam adhesive to the center front panel as shown in photo. Attach the black and gold cut apart element to the top of the key hold and adhere it to the bottom of the card front in the center.

6. Decorate the inside with gold washi, tag, and the $\frac{5}{8}$ " x $5\frac{1}{2}$ " blue stripe paper.



Card #3

1. Trim out the four large stamps from the *Bird Song* signature page leaving the ivory border.

2. Trim a $3\frac{1}{4}$ " x 4" panel and two pieces that are $1\frac{1}{4}$ " x 4" from *Harmony*. Add gold washi to the centers of the $1\frac{1}{4}$ " x 4" pieces. Trim these pieces so you have two gold pieces that measure $\frac{7}{8}$ " x 3" and add to the side panels.

3. Trim a red/black section from *Longevity*, then trim so you have two pieces that measure 3" long add these to the gold side panels with foam adhesive in the center.

4. Trim the red and cream floral border strip to measure $5\frac{1}{2}$ " x $\frac{3}{4}$ " and add it to the bottom section of the front of the card. Attach the $3\frac{1}{4}$ " x 4" piece to the center front panel and add the stamps to the front with foam adhesive as shown.

5. Add a piece of gold washi to a scrap piece of paper and attach it to the back of the key hole trimming to fit. Add the key hole element to the front of the card in the center.

6. Decorate the inside with the remaining border strips, tag and another small stamp.