

# Mother Goose – Square Tag & Metal Clock Key Card Set



– Mother Goose Card Set –

Designed by ~ Ginger Rapp

## Graphic 45® Supplies:

1 ea Mother Goose 8 x 8 Paper Pad	(4500755)
1 pk G45 Staples Square Tags–Ivory	(4501282)
1 pk G45 Staples Metal Clock Keys	(4501293)
1 pk 5½ x 5½ Square Cards & Envelopes–Ivory	(ADP5555)

## Additional Supplies, Tools, Adhesives & Ink:

Paper trimmer, detail scissors, scoring tool, ruler, various adhesives, foam adhesive, \*Optional: distress ink, ribbon

## Notes:

- For a fun, detailed video tutorial, visit our YouTube page!
- Measurements are width x height unless specified.
- Distress papers with Walnut Stain ink before adhering.
- The following instructions are for three cards. Use the remaining supplies provided in your kit to create three additional cards by following the steps using other papers!

## Directions:



### Card #1

1. From *Twinkle Little Star* cut a piece to measure 5" x 5" and adhere this to the inside of the card. From *Spot On* cut a piece to measure 5½" x 1½" and adhere this to the bottom of the star paper approximately ¼" from the bottom. Cut another piece from *Checkers* to measure 5½" x ¾" and layer it onto the *Spot On* strip as shown. Trim out the *Twinkle Little Star* border strip from *Playful Postage* and trim to fit onto the *Checkers* strip. Add one of the stamps from *Playful Postage* to the upper right hand corner.
2. Cut a piece of *Twinkle Little Star* to measure 4¼" x 4". Round the corners and adhere this to the front of the tag. Add ribbon to the grommet if desired and set aside.
3. From the B-side of *Checkers* cut a piece to measure 5¼" x 5¼" and adhere it to the front of the card. (Note: all cards are top folding)
4. From *Spot On* cut a piece to measure 5¼" x 2". Add adhesive to just the two short sides and adhere this to the center front of the card creating a belly band for the tag.
5. Cut a piece of *Checkers* to measure 5¼" x ¾" and layer it onto the *Spot On* belly band in the center.
6. Trim out the *Twinkle Little Star* cut apart from Little Boy Blue and the Twinkle Star large stamp from *Storytime*. Add foam adhesive to the back of both elements in the center only. (If using scrap chipboard or cardboard you can cover the entire back which will make the elements more sturdy) Adhere these to the belly band as shown in the photo making sure none of the adhesive goes beyond the belly band. Trim out two stamps and add them as shown. Add a foam square to the back of the solid key and adhere it to the front.

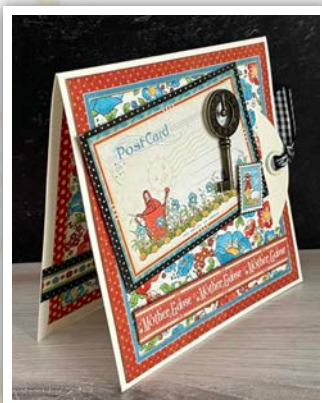


### Card #2

1. From *Spot On* cut a piece to measure 5" x 5" and adhere this to the inside of the card. Cut a piece from *Ring Around the Rosie* to measure 4½" x 4½" and adhere it to the inside leaving an equal border. From the B-side of *Sunshine Stripe* cut a strip to measure 5½" x ¾" and adhere it approximately 1" from the bottom. Trim out the green posies border from *Playful Postage* to be 5½" and layer it onto the *Sunshine Stripe* piece.



## Mother Goose - Square Tag & Metal Clock Key Card Set



2. From the B-side of *Sunshine Stripe* cut a piece to measure  $4\frac{1}{4}$ " x 4" and round the corners. Adhere this to the front of the square tag. Trim out the red posies border from *Playful Postage* to measure  $4\frac{1}{4}$ " and add it to the top portion of the tag. Add one of the stamps as shown. (The fussy cut flowers will be added after the border is trimmed off in the next step.)

3. From *Mother Goose* use a paper trimmer to remove the outer red dot border. (See step out photo) Set aside.

4. Fussy cut the floral cluster from the middle section of *Mother Goose* and add it to the bottom portion of the tag.

5. From *Ring Around the Rosie* cut a piece to measure  $5\frac{1}{4}$ " x  $5\frac{1}{4}$ ". Trim the border that was cut in Step 3 to go around the perimeter of the  $5\frac{1}{4}$ " x  $5\frac{1}{4}$ " piece and glue in place. (Overlap the borders leaving the corners intact.)



6. Take this element to your paper trimmer and cut a slit  $\frac{5}{8}$ " from the right edge without cutting into the top and bottom border. (This creates an opening for the tag to be inserted.) Add adhesive to the perimeter only and adhere this to the front of the card. (Make sure you can insert your tag.)

7. Add foam adhesive to the back of the *Mother Goose* border from *Playful Postage* which is trimmed to  $4\frac{1}{2}$ " and adhere it to the bottom section as shown making sure you don't have adhesive covering the slit.

8. Cut a piece from the B-side of *Sunshine Stripe* to measure  $4\frac{1}{4}$ " x  $2\frac{7}{8}$ " and adhere it to the back of the postcard from Story Time and adhere it to the front of the card with foam adhesive to the left portion keeping the tag opening free. Add a stamp with foam adhesive as shown and add the clock key to the front.



### Card #3

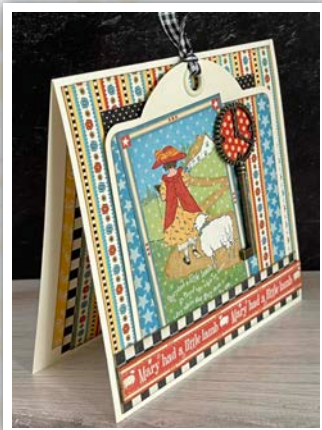
1. From the B-side of *Pocketful of Posies* cut a piece to measure  $4\frac{3}{4}$ " x  $4\frac{3}{4}$ " and adhere it to the inside of the card. Layer a strip of *Checkers* that measures  $1\frac{3}{8}$ " x  $5\frac{1}{4}$ " and a strip of *Sunshine Stripe* that measures 1" x  $5\frac{1}{4}$ " to the left side. Add to of the fussy cut stamps from *Playful Postage* as shown.

2. From *Twinkle Little Star* cut a piece to measure  $4\frac{1}{4}$ " x 4" and round the corners and adhere this to the front of the tag. From *Sunshine Stripe* cut a yellow floral border to be 4" and add it to the right hand side of the tag front. Trim out the Mary Had a Little Lamb cut apart from *Little Boy Blue* and add it to the left side of the tag front.

3. Using details scissors or a 1" circle punch cut a circle from a scrap of *Spot On*. Glue this to the inside of the clock key face. Add foam adhesive to the back of the key and adhere it to the tag.

4. From *Sunshine Stripe* cut a piece to measure  $5\frac{1}{4}$ " x  $5\frac{1}{4}$ " and adhere this to the front of the card. Trim a piece of *Checkers* to measure  $5\frac{1}{4}$ " x 1" and adhere this to the bottom of the card front in a U-shape to create a tuck spot for the tag. Add foam adhesive to the back of the "Mary had a Little Lamb" border strip which is cut to  $5\frac{1}{4}$ " and add it to the pocket front.

5. From the B-side of *Sunshine Stripe* cut a piece to measure 4" x  $3\frac{3}{4}$ " and adhere it to the center of the card front just above the pocket. (The bottom edge is flush with the pocket top.) Trim out the large *Mother Goose* stamp from *Storytime* and add it to the front of the card.



You can complete an additional three cards following the same steps using other papers from the collection! Find details on the G45 YouTube Channel!