



G45 Album Kit

2022 Vol. 2: Alice's Tea Party

## Alice's Tea Party - Upside Down Tag Album

Designed by ~ Maria Cole

### Graphic 45® Supplies:

1 pk Alice's Tea Party 12 x 12 Collection Pack	(4502359)
1 pk Alice's Tea Party Chipboard	(4502361)
1 pk Alice's Tea Party Journaling Cards	(4502363)
1 pk Flower Assortment - Shades of Pink	(4502341)
1 pk Precious Pink Trim	(4502290)
1 pk Large Tags—Ivory	(4500849)

### Tools, Adhesives & Ink:

Paper trimmer, scissors, ruler, scoring tools, bone folder, pencil, hole punch, various adhesives, foam adhesive, Opt: distress ink

### Notes:

- For a fun, detailed video tutorial, visit our YouTube channel!
- All measurements are width x height, unless specified.
- When cutting papers, be mindful of the pattern direction.
- Paper edges can be distressed with ink, which is optional.



— Upside Down Tag Album —

### Directions:



1. Place a tag upside down. Use a hole punch to punch a hole in the center of the tag, about ¼" below the top of the tag. Use this tag as a template to punch holes in remaining tags.

2. Take *Fantasy* and trim off the bottom "I'm Late" / "Always Time for Tea" border. Cut this border into three 3⅞" pieces.



3. Locate the assorted flower, leaf, and butterfly shapes in the photo.





# Alice's Tea Party - Upside Down Tag Album



4. Attach the flower layers together with foam adhesive.



5. Adhere one of the large butterflies over the other, adhering the butterfly at an angle to create the illusion of a fluttering movement.



6. Tag 1: Take one of the upside down tags and adhere one of the borders from step 2 to the top of the tag, about  $\frac{1}{4}$ " from the top. Attach teapot sticker; punch a hole through the sticker. Adhere "You Are My Cup of Tea" journaling card.



7. Adhere flowers, butterflies, and "Time for Tea" chipboard. Cut a 14" piece of chevron ribbon; tie a bow through the grommet.

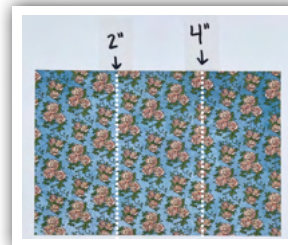


8. Find *Precocious* (b-side) and cut two  $3\frac{7}{8}$ " x 7" pieces.

9. Cut a 12" piece of gros-grain ribbon. Wrap the ends snugly around one of the papers; adhere the ends behind the paper, creating a belly band. Adhere "It's Always Time" chipboard to just the ribbon.



10. Locate *Curiouser* (b-side) and cut two 6" x 9" pieces. Score each piece vertically at 2" and 4".



11. Adhere small journaling cards inside the far right scored sections. Next, fold each paper accordion-style.



12. Tag 2: Center and adhere *Precocious* paper to the tag. Insert *Curiouser* accordion paper. Cut a 12" piece of satin ribbon; tie a bow.



13. Locate the Queen of Hearts and Mad Hatter journaling cards shown. Find your second sheet of *Fantasy* (b-side) and cut two  $3\frac{1}{4}$ " x  $5\frac{1}{4}$ " pieces.



# Alice's Tea Party – Upside Down Tag Album



14. Tag 3: Adhere one of the *Fantasy* (b-side) papers over the Queen of Hearts journaling card. Adhere this and one "I'm Late" border from step 2 to the tag. Attach blue square sticker; punch a hole. Adhere some flowers and leaves. Tie a bow with 14" of chevron ribbon.



15. Find your first sheet of *Fantasy* paper and cut out the pink teacup and teapot image. Trim off the heart and spade border; cut a  $3\frac{7}{8}$ " piece. Then locate the large and small journaling cards in the photo.



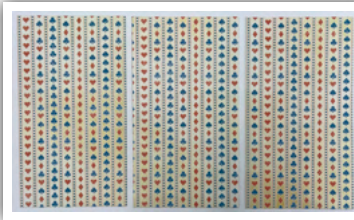
16. Tag 4: Trim "You're Invited" floral sticker border to  $3\frac{7}{8}$ " long and attach about  $\frac{1}{2}$ " from the top. Adhere just the left, bottom, and right sides of the small card onto the large card, creating a pocket. Adhere the pocket and border. Insert pink tea cup image, then tie a bow with 12" satin ribbon.



17. Tag 5: Repeat step 12 using remaining papers, large square chipboard, and 14" chevron ribbon.

18. Tag 6: Repeat step 14 using 12" satin ribbon. Attach rabbit sticker on top; punch hole.

19. Locate *Dreamy* (b-side) and cut three  $3\frac{7}{8}$ " x 7" pieces.



20. Find your first sheet of *Fantasy* paper and trim off the tall character border and the "You're invited" floral border.

Cut each border into three  $3\frac{7}{8}$ " long pieces.



21. Adhere "You're invited" borders to the bottom of the *Dreamy* papers.

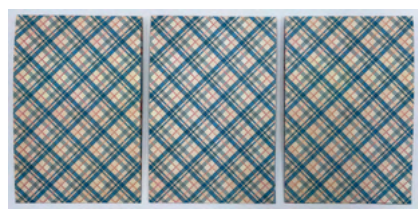
Adhere just the left, bottom, and right sides of the tall borders to create pockets. Trim "Always Time for Tea" sticker border into three  $3\frac{7}{8}$ " long pieces; attach to top of papers.

22. Tag 1 (back): Center and adhere one *Dreamy* pocket, then insert small journaling card. Attach Queen of Hearts sticker; punch hole. Adhere "You're Invited" chipboard.





# Alice's Tea Party – Upside Down Tag Album

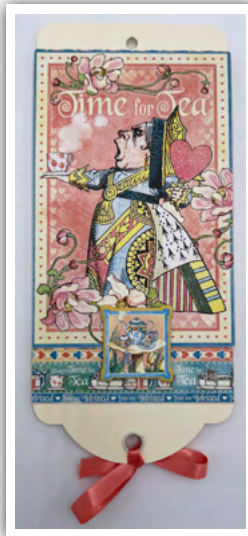


23. Take *Enchanting* (b-side) and cut three 4" x 12" pieces. Score each at 6" horizontally, then fold in half to create a flap.



24. Locate your first sheet of *Fantasy* and trim off the pink and blue "Always Time for Tea" border. Cut three 3 7/8" pieces.

25. Tag 2 (back): Adhere your second "Time for Tea" Queen of Hearts journaling card to the front of one flap. Then, adhere the flap and border. Adhere just half of the blue square chipboard to the card.



26. Tag 3 (back): Repeat step 22 using "Tea Party" chipboard, pink sticker, and "I'm Late" small card.



27. Tag 4 (back): Repeat step 25 using "Tea Party" journaling card and blue square chipboard.



28. Tag 5 (back): Repeat step 22 using "Always Time for Tea" chipboard and "Time for Tea" small card.



29. Tag 6 (back): Repeat step 25 using your second Mad Hatter card, but attach the blue square sticker first. Attach "You're Invited" round chipboard to the border with foam adhesive; this will hold the flap in place.



30. Place your tags in number order (one through six), then insert the binder ring through the top of the tags.

There's also a fun coordinating Card Kit sold separately!

