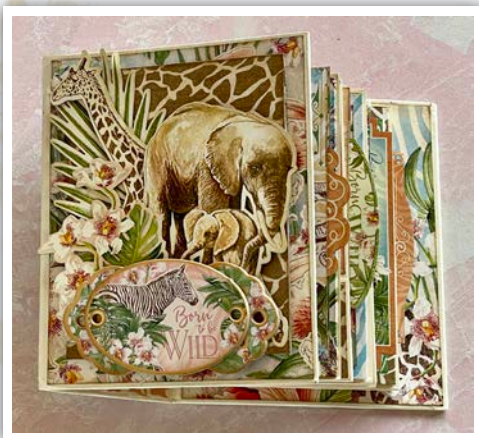


Wild & Free – ATC Tag & Pocket Album



— Wild & Free Tag & Pocket Album —

Designed by ~ Carla La Vera

Graphic 45® Supplies:

1 pk Wild & Free 12 x 12 Collection Pack	(4502405)
1 pk Wild & Free Die-cut Chipboard	(4502407)
1 pk Wild & Free Ephemera Assortment	(4502410)
1 ea G45 Staples ATC Tag & Pocket Album—Ivory	(4501813)

Tools, Adhesives & Ink:

Paper trimmer, detail scissors, ruler, scoring tools, bone folder, craft knife, corner rounder, various adhesives, foam adhesive, optional: light brown ink & blending tool

Notes:

- The Collection Pack cover will be used. Do not discard.
- All measurements are width x height, unless specified.
- When cutting papers, be mindful of the pattern direction.
- For a fun, detailed video tutorial, visit our YouTube page!

Directions:



1. Cut a $3\frac{7}{8}$ " x $4\frac{7}{8}$ " Piece of *Wild & Free* (trim it from the corner with the lion), add it to the back of the front cover. Cut a $4\frac{1}{2}$ " x $4\frac{7}{8}$ " piece of *Wild & Free* (trim it from the corner with the giraffe, then, trim the right edge to get finally a $3\frac{7}{8}$ " x $4\frac{7}{8}$ ", add it to the back of the back cover.



2. Cut five pieces $\frac{3}{16}$ " x $4\frac{7}{8}$ " and add these pieces to the spine between the pages, shown in previous image.



3. Cut a $2\frac{3}{8}$ " x 1 Piece of *Born to be Wild* and fold it by the middle on the 1" side. Take the ephemera piece shown and trim

the top edge and add it to the one side of the folded piece and add the other side to the top edge of the page 1 (top flap). Cut a $3\frac{3}{8}$ " x $4\frac{3}{8}$ " Piece of *Born to be Wild* (B-side) and add it to the page 1, then, add the small pink sticker shown to the "top flap".

Wild & Free – ATC Tag & Pocket Album



4. Cut a $3\frac{5}{8}$ " x $4\frac{5}{8}$ " piece of *Wild & Free* (B-side) and add it to page 2. Cut a $1\frac{1}{4}$ " x $5\frac{3}{8}$ " piece of *Savanna Babies* and score a line at $\frac{1}{2}$ " from both edges on the $5\frac{3}{8}$ " side. Cut the element shown of *Creatures Great and Small* and add it to the $1\frac{1}{4}$ " x $5\frac{3}{8}$ " piece, then, add the score sections to the Page 2 this will be a belly band.



5. Cut a $3\frac{3}{8}$ " x $2\frac{7}{8}$ " piece of *Wild & Free* (B-side) and add it to the upper section

of page 3. Cut a $3\frac{3}{8}$ " x $1\frac{3}{8}$ " piece of *Born to be Wild* (B-side) and add it to the pocket. Add the clock from the Ephemera Assortment to the pocket, then, fussy cut the flower from the *Creatures Great and Small* and add it to the pocket.

6. Cut a $3\frac{3}{8}$ " x $2\frac{7}{8}$ " piece of *Wild & Free* (B-side) and add it to the upper section of page 4. Cut a $3\frac{3}{8}$ " x $1\frac{3}{8}$ " piece of *Born to be Wild* (B-side) and add it to the pocket. Add the leaves and the stamp (EA) to the pocket.



7. Cut a $3\frac{3}{8}$ " x $4\frac{3}{8}$ " piece of *Wild & Free* (B-side) and add it to page 5. Add the blue banner ephemera to the upper section as shown.



8. Cut a $5\frac{5}{8}$ " x $4\frac{5}{8}$ " piece of *Mighty Menagerie* (B-side) and add it to page 6. Cut a $1\frac{1}{4}$ " x $3\frac{3}{4}$ " piece of *Born to be Wild* (B-side) and add it to page 6 at $\frac{1}{4}$ " from the left and bottom edges. Add the sticker shown. Fussy cut the quote shown from the *Creature Great and Small* and add it to page 6.



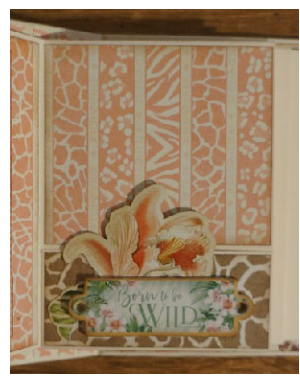
9. Cut a $8\frac{5}{8}$ " x $4\frac{3}{8}$ " piece of *Mighty Menagerie* and score a line at $3\frac{3}{8}$ " from the left edge on the $8\frac{5}{8}$ " side, then, score another line at $3\frac{1}{4}$ " from the first score line. Fold this piece as an accordion. Cut two 3 " x 4 " pieces of *Born to be Wild* (B-side) and add them to the left and middle section on the flowers side of the piece $8\frac{5}{8}$ " x $4\frac{3}{8}$ ".



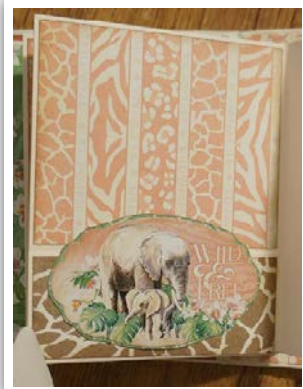
10. Flip over the piece $8\frac{5}{8}$ " x $4\frac{3}{8}$ ". Cut a 3 " x 4 " piece of *Monkey Trouble* (B-side) and add it to the middle section. Take the chipboard pieces shown and add a piece of left over (1 " x $2\frac{3}{4}$ ") underneath the right side and trim the borders. Fold the piece $8\frac{5}{8}$ " x $4\frac{3}{8}$ " and add the chipboard piece to the narrow section. Add this accordion to page 7.

11. Cut a $3\frac{3}{8}$ " x $4\frac{3}{8}$ " piece of *Born to be Wild* (B-side) and add it to page 8. Cut a $1\frac{1}{4}$ " x $5\frac{3}{8}$ " piece of *Savanna Babies* and score a line at $\frac{1}{2}$ " from both edges on the $5\frac{3}{8}$ " side. Cut the element shown of *Creatures Great and Small* and add it to the $1\frac{1}{4}$ " x $5\frac{3}{8}$ " piece, then, add the score sections to the Page 8 this is a belly band.

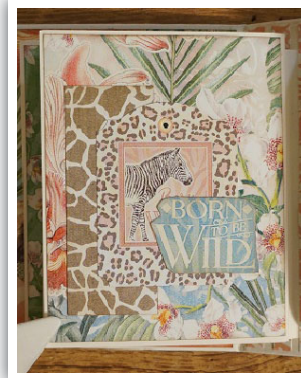
Wild & Free – ATC Tag & Pocket Album



13. Cut a $3\frac{3}{8}$ " x $2\frac{7}{8}$ " piece of *Born to be Wild* (B-side) and add it to the upper section of page 10. Cut a $3\frac{3}{8}$ " x $1\frac{3}{8}$ " piece of *Savanna Babies* (B-side) and add it to the pocket. Add the sticker shown to a piece of left-over (*Monkey Trouble*) trim around leaving a thin border and add it to the pocket.



14. Cut a $3\frac{3}{8}$ " x $4\frac{5}{8}$ " piece of *Born to be Wild* (B-side) and add it to page 11. Add the brown banner ephemera to the upper section as shown.



15. Cut a $3\frac{3}{8}$ " x $4\frac{5}{8}$ " piece of *Lush & Lovely* and add it to page 12. Cut a $1\frac{1}{4}$ " x $3\frac{1}{4}$ " piece of *Savanna Babies* (B-side) and add it to the page 12 at $\frac{1}{4}$ " from the left and bottom edges. Add the sticker shown. Fussy cut the quote shown from the stamp of *Born to be Wild* and add it to page 12.



16. Cut a $8\frac{5}{8}$ " x $4\frac{5}{8}$ " piece of *Lush & Lovely* and score a line at $3\frac{3}{8}$ " from the left edge on the $8\frac{5}{8}$ " side, then, score another line at $3\frac{1}{4}$ " from the first score line. Fold this piece as an accordion. Cut two 3" x 4" pieces of *Monkey Trouble* (B-side) and add them to the left and middle section on the flowers side of the piece as shown.



17. Flip over the piece $8\frac{5}{8}$ " x $4\frac{5}{8}$ ". Cut a 3" x 4" piece of *Lush & Lovely* and add it to the middle section. Cut a $1\frac{7}{8}$ " x 3" piece of *Born to be Wild* (B-side), take the chipboard element shown and add it to the $1\frac{7}{8}$ " x 3" piece. Fold the piece $8\frac{5}{8}$ " x $4\frac{5}{8}$ " and add the piece with the chipboard to the narrow section. Add this accordion to page 13.

18. Cut a $3\frac{3}{8}$ " x $4\frac{5}{8}$ " piece of *Creatures Great and Small* (B-side) and add it to page 14. Cut a $1\frac{1}{4}$ " x $5\frac{5}{8}$ " piece of *Lush & Lovely* (B-side) and score a line at $\frac{1}{2}$ " from both

Wild & Free – ATC Tag & Pocket Album



edges on the $5\frac{3}{8}$ " side. Cut the element shown of *Creatures Great and Small* and add it to the $1\frac{1}{4}$ " x $5\frac{3}{8}$ " piece, then, add the score sections to the Page 14 this is a belly band.

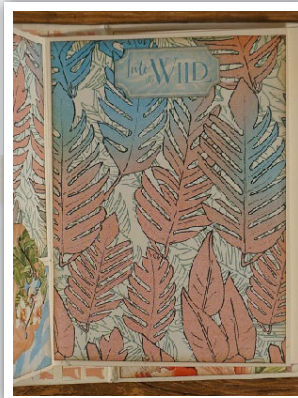
19. Cut a $3\frac{3}{8}$ " x $2\frac{7}{8}$ " piece of *Creatures Great and Small* (B-side) and add it to the upper section of page 15.

Cut a $3\frac{3}{8}$ " x $1\frac{3}{8}$ " piece of *Lush & Lovely* (B-side) and add it to the pocket. Take the ephemera flowers shown and add it to the pocket, then, add the stamp ephemera.



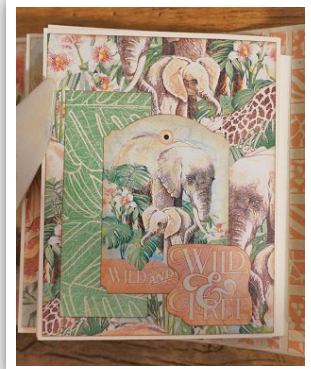
and add it to the pocket.

21. Cut a $3\frac{3}{8}$ " x $4\frac{3}{8}$ " piece of *Creatures Great and Small* (B-side) and add it to page 17. Add the blue element ephemera to the upper section of page 17.



20. Cut a $3\frac{3}{8}$ " x $2\frac{7}{8}$ " piece of *Creatures Great and Small* (B-side) and add it to the upper section of page 16. Cut a $3\frac{3}{8}$ " x $1\frac{3}{8}$ " piece of *Lush & Lovely* (B-side) and add it to the pocket. Take the ephemera element shown

22. Cut a $3\frac{3}{8}$ " x $4\frac{3}{8}$ " piece of *Savanna Babies* and add it to page 18. Cut a $1\frac{1}{4}$ " x $3\frac{1}{4}$ " piece of *Monkey Trouble* (B-side) and add it to the page 18 at $\frac{1}{4}$ " from the left and bottom edges. Add the Sticker shown. Fussy cut the quote shown from the pink sticker "Wild & Free" and add it to page 18.

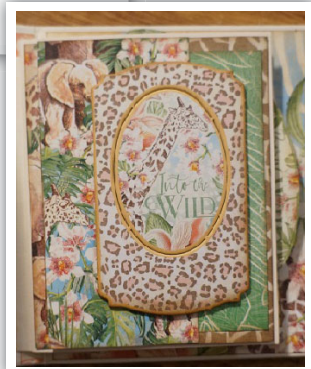


23. Cut a $8\frac{5}{8}$ " x $4\frac{3}{8}$ " piece of *Savanna Babies* and score a line at $3\frac{3}{8}$ " from the left edge on the $8\frac{5}{8}$ " side, then, score another line at $3\frac{1}{4}$ " from the first score line. Fold this piece as an accordion. Cut two 3 x 4 pieces of *Savanna Babies* (B-side) and add them to the left and middle sections on the main side of the piece $8\frac{5}{8}$ " x $4\frac{3}{8}$ ".



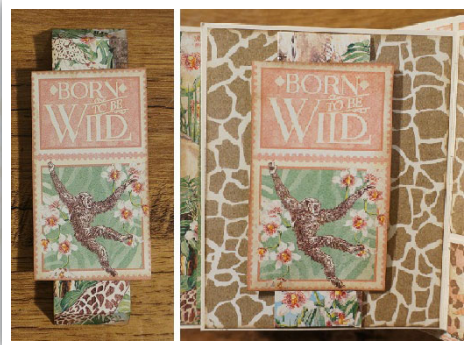
24. Flip over the piece $8\frac{5}{8}$ " x $4\frac{3}{8}$ ". Cut a 3" x 4" piece of *Monkey Trouble* and

add it to the middle section. Take the chipboard piece shown and add a piece of left-over (1 " x $3\frac{1}{2}$ ") underneath of the right side and trim the borders. Fold the piece $8\frac{5}{8}$ " x $4\frac{3}{8}$ " and add the chipboard piece to the narrow section. Add accordion to page 19.



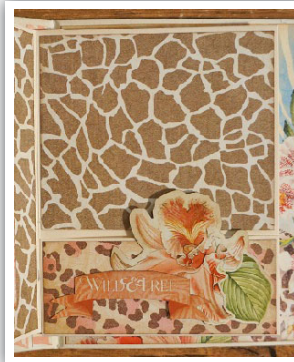
25. Cut a $3\frac{3}{8}$ " x $4\frac{3}{8}$ " piece of *Savanna Babies* (B-side) and add it to page 20. Cut a $1\frac{1}{4}$ " x $5\frac{3}{8}$ " piece of

Wild & Free – ATC Tag & Pocket Album

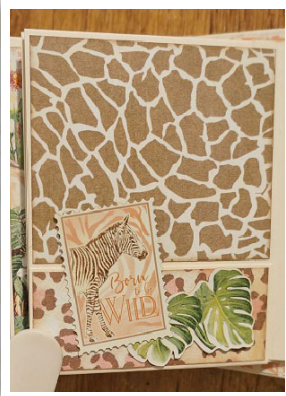


the 1 1/4" x 5 3/8" piece, then, add the score sections to the Page 20 this is a belly band.

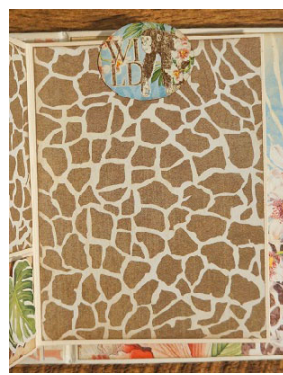
26. Cut a 3 3/8" x 2 7/8" piece of *Savanna Babies* (B-side) and add it to the upper section of page 21. Cut a 3 3/8" x 1 3/8" piece of *Wild & Free* (B-side) and add it to the pocket. Take the flower that we trimmed on step 12 and add it to the pocket, then, add the small pink banner ephemera.



27. Cut a 3 3/8" x 2 7/8" piece of *Savanna Babies* (B-side) and add it to the upper section of page 22. Cut a 3 3/8" x 1 3/8" piece of *Wild & Free* (B-side) and add it to the pocket. Take the leaves and the ephemera stamp shown and add them to the pocket.



28. Cut a 3 3/8" x 4 3/8" piece of *Savanna Babies* (B-side) and add it to page 23. Add the blue element with the ephemera monkey shown, round it and add it to the upper section of page 23.



Savanna Babies and score a line at 1/4" from both edges on the 5 3/8" side. Cut the element shown of *Creatures Great and Small* and add it to



29. Cut the label shown of *Born to be Wild* and score a line at 1/2" from the top edge on the height direction and add it to the top edge of the Page 24, then, add the rounded sticker to the "o", as shown in the picture. Cut a 3 3/8" x 4 3/8" piece of *Wild & Free* (B-side) and add it to page 24.



30. Tags: Cut a 2 3/8" x 2 3/4" piece of *Born to be Wild* (B-side), round the corners and add it to a tag, then, add the small round sticker to the hole. Follow the same procedure to all the tags. Papers: 2 3/8" x 2 3/4" piece of *Mighty Menagerie* (B-side); 2 3/8" x 2 3/4" piece of *Savanna Babies* (B-side) and 2 3/8" x 2 3/4" piece of *Lush and Lovely*. Insert the tags into the pockets as you prefer.



31. Files on belly band pages: Trim all the big cards (6 x 4) of *Born to be Wild* and *Wild and Free*, fold them by the middle in the 6" direction, add a small sticker inside as shown, then, insert behind the belly bands as you prefer.

32. Horizontal Minis: Cut a 4 1/2" x 3 1/2" piece of *Mighty Menagerie* and cut another piece of *Monkey Trouble* with the same dimensions. Fold both pieces in the middle in the 4 1/2" direction and add the sticker shown

Wild & Free – ATC Tag & Pocket Album



to the *Mighty Menagerie* mini file and add the *Creatures Great and Small* stamp to the *Monkey Trouble* mini file. Insert these files into the pockets as you prefer.

33. Vertical Minis: Cut a $2\frac{1}{4}$ " x 7" piece of *Lush and Lovely* and cut a $2\frac{1}{4}$ " x 7" piece of *Wild and Free*, fold them by the middle in the 7" direction, then, add the stamps shown on the front page.



Insert these mini files into the pockets as you prefer.



34. Pocket Page Insert: Cut four pieces $4\frac{1}{4}$ " x 6" of *Mighty Menagerie*, *Wild & Free*, *Savanna Babies* and *Monkey Troubles*, fold in the middle on the 6" direction, open and add the ephemera elements as shown. Fold and insert them into the pocket pages.



35. Cover and Back Cover: Cut two pieces $3\frac{7}{8}$ " x $4\frac{7}{8}$ " of *Lush and Lovely* and add them to the Front and Back Cover of the Album. Cut a $3\frac{1}{4}$ " x $4\frac{1}{4}$ " piece of *Savanna*

Babies (B-side), reinforce this piece with the Cover Page of the *Wild & Free* Pad, then, it to the remaining of the chipboard elements as shown then, add it to the cover.



36. Add the ephemera palm leaf to the left side of the front cover, then, add the giraffe to the left side too. Add the elephant to the right side using some pieces of chipboard underneath to give it volume.



37. Add the flower ephemera to the left side of the cover. Add the chipboard piece "Into the Wild" to the bottom section of the front cover, then, add the chipboard piece with the zebra over the first chipboard added.

38. Cut a 2 " x $4\frac{7}{8}$ " Piece of *Wild & Free* and trim the middle window with the dimensions shown and adhere it to the spine. Trim



a little piece of chipboard and add it inside the metal embellishment as shown. Add the chipboard element "Born to be Wild" over the metal embellishment.