



G45 Album Kit

2022 Vol. 9: Café Parisian

## • Café Parisian – Trifold Waterfall Folio Album

*Designed by ~ Carla La Vera*

### Graphic 45® Supplies:

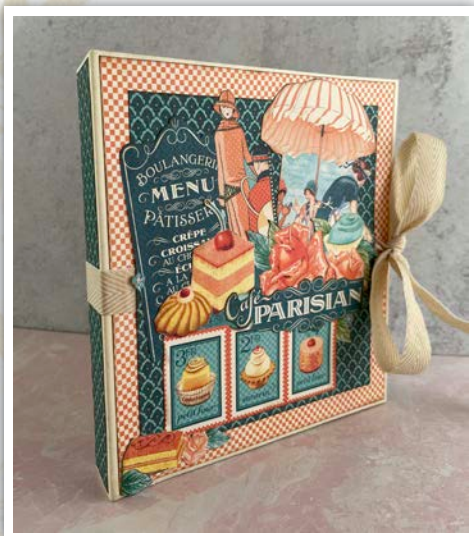
- |  |           |
|--|-----------|
| 1 pk Café Parisian 12 x 12 Collector's Edition | (4502534) |
| 1 pk G45 Classic Ivory & Natural Linen Trim    | (4502289) |
| 1 ea G45 Trifold Waterfall Folio Album—Ivory   | (4502382) |

### Tools, Adhesives & Ink:

Paper trimmer, detail scissors, ruler, scoring tools, craft knife, bone folder, corner rounder, various adhesives, Opt: brown ink

### Notes:

- When cutting papers, be mindful of the pattern direction.
- All measurements are width x height, unless specified.
- For a fun, detailed video tutorial, visit our YouTube page!



— Café Parisian Waterfall Album —

### Directions:



1. Cut a  $7\frac{1}{8}$ " x  $7\frac{3}{8}$ " piece of *Floral Souffle* (B-side) and add it to the front cover. Take 40" of the wider ribbon and place the middle point matching with the left spine (don't add). Cut a  $6\frac{1}{8}$ " x  $6\frac{1}{4}$ " piece of *Cherry on Top* (B-side) center and add it to the front cover too (add it over the ribbon).



2a. From a sheet of *Café Parisian* fussy cut the elements shown in the image. Trim the section on the upper left corner of the paper. Take care when cutting each element. Set these aside, as they will be used throughout the project

a = Vertical Strip: to  $\frac{1}{2}$ " x  $6\frac{3}{8}$ "

b = Corner Piece: approx 5" x 3", decreasing  $\frac{1}{2}$ " each layer as shown.



# Café Parisian – Trifold Waterfall Folio Album

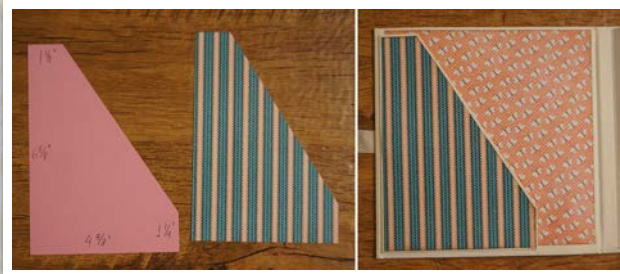


2b. From *Crème de la Crème* fussy cut the bottom center card shown, don't worry about the bottom section of the ladies because it will be covered by the desserts fussy cut. Add the Ladies with the umbrella fussy cut to the upper right section as shown in the image on the left. Add the menu fussy cut to the left upper side. Add the dessert fussy cut to the bottom section and finally the "Café Parisian" as shown in the picture above.



*Souffle* (B-side) and add it to the left side of the album.

3. Cut two 1" x  $7\frac{5}{8}$ " pieces of *Cherry on Top* (B-side) and add it to the spines of the album. Cut a  $2\frac{1}{4}$ " x  $7\frac{5}{8}$ " piece of *Cherry on Top* (B-side) and add it to the right section of the back cover. Cut a  $4\frac{7}{8}$ " x  $7\frac{5}{8}$ " piece of *Floral*



4. Cut a Piece of *Parasol Bouquet* as shown and add it to the pocket of the first page. Cut a  $6\frac{3}{4}$ " x 7" piece of *Crepe Suzette* (B-side) and add it to the first page of the album underneath the pocket.

5. Cut the card shown in *Life is Sweet* and add it to the pocket leaving  $1\frac{1}{4}$ " from the left edge and 1"



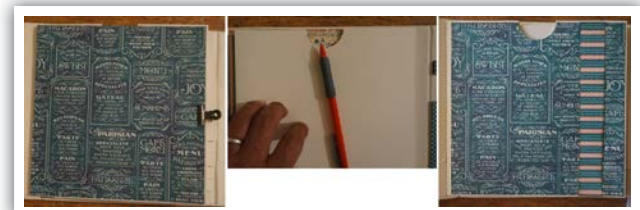
from the bottom edge, then, add the macarons and flowers fussy cut of *Café Parisian* and add it to the bottom left corner of the card.



6. Cut a  $4\frac{3}{4}$ " x 12" piece of *Bon Appétit* paper and score a line at  $\frac{1}{8}$ " and at  $7\frac{1}{4}$ " on the 12" side. Cut a  $4\frac{3}{4}$ " x  $6\frac{3}{4}$ " piece of *Cherry on Top* and add the  $\frac{1}{2}$ " score section of the  $4\frac{3}{4}$ " x 12" to the bottom edge of this piece, round or trim the free corners as you prefer. Fold as shown.



7. Trim 26" of narrow ribbon and wrap the folder placing the middle to the left side. Cut the card shown of the *Life of Sweet*, trim out the border and add it to the front page of the folder. Open the folder and add the card shown (*Life is Sweet*) to the bottom page of the folder; then, cut the element shown of *Crème de la Crème* and add it to the folder.



8. Pocket Page front: Cut a 7" x  $7\frac{1}{8}$ " piece of *Bon Appétit* paper, place it over the pocket page (don't add it), mark the half round of the top and trim it, then, add the piece to the pocket page. Cut a 1" x  $7\frac{1}{8}$ " piece of *Parasol Bouquet* and add it to the pocket page leaving  $\frac{7}{8}$ " from the right edge.

9. Cut a 4" x  $5\frac{1}{2}$ " piece of *Life is Sweet* and add it to the pocket page leaving  $\frac{1}{2}$ " from the bottom and  $\frac{1}{2}$ " from the left edge. Fussy cut the big stamp of *Postage Patisserie* and adhere to the right side of the page pocket.



# Café Parisian – Trifold Waterfall Folio Album



10. Shown above right: Cut a 7" x 5" piece of *Parasol Bouquet*, mark the half round, trim it and add it to the back of the Pocket Page. Cut a 7" x 2½" piece of *Parasol Bouquet* and add it to the bottom section as a pocket (apply adhesive on the bottom and lateral edges only, then, cut the border shown with L= 7" and add it to the top edge of the pocket.



11. Cut the Piece with the dessert of *Crème de la Crème* and add it to the pocket. Cut the cards shown of *Life is Sweet* and insert it into the pocket.



12. Cut a 7½" x 4⅝" Piece of *Petits Fours* (B-side), open the pages of the first waterfall and add it to the bottom section. Cut five 7½" x ½" pieces of *Petits Fours* (B-side) and add it between the pages of the waterfall.

## • Waterfall No. 1

13. Trim the borders shown with L= 6⅝". Trim the upper right border of the *Café Parisian* with ½" x 6⅝", then, add these borders to the bottom section of the Pages 2; 4 and 6.

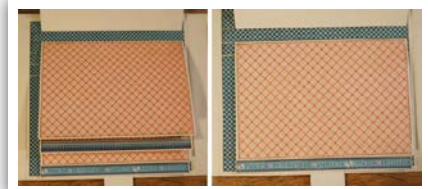


14. Cut three pieces 12" x 3⅞" of *Floral Soufflé*. Take two pieces and score a line at 6⅝" on the 12" side, fold the small section to the left, trim or round the free corners of the small section, then, add the 6⅝" section to the Pages 2 and 6. Take the third piece and score a line at 5⅝" on the 12 side, fold it and add it to the Page 4 (opposite direction).



15. Cut three stamps of *Postage Patisserie* and add them to the Pages 2; 4 and 6 applying adhesive only to the half section to allow to insert the small flap underneath.

16. Cut two 6⅝" x 4⅝" pieces of *Confectionery* and add them to the Pages 3 and 5 of the first waterfall.



17. Cut a 6⅝" x 4⅝" piece of *Parasol Bouquet* (B-side) and add it to the Page 1. Cut a ¾" x 3⅞" piece of *Confectionery*

(B-side) and add it to the Page 1 centered between top and bottom edges and leaving ½" from the left edge. Add the card shown of *Crème de la Crème* to the Page 1, then, add the fussy cut shown (*Café Parisian*) to the bottom right corner of the Page 1, then, open the page 1 and add the element shown of *Crème de la Crème*.

## • Waterfall No. 2

18. Cut a 4⅝" x 7½" Piece of *Crepe Suzette* (B-side), open the pages of the second waterfall and add it to the left section. From *Crepe Suzette* (B-side) cut five



# Café Parisian – Trifold Waterfall Folio Album



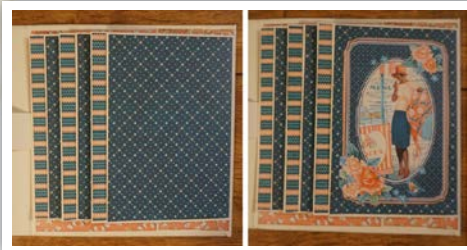
$\frac{1}{2}$ " x  $7\frac{1}{8}$ " pieces of and add it between the pages of the waterfall as shown.



19. Trim three  $6\frac{3}{8}$ " x  $\frac{1}{2}$ " pieces of *Parasol Bouquet* (B-side) paper

and cut three  $6\frac{3}{8}$ " x  $3\frac{7}{8}$ " pieces of *Life is Sweet* = and add them to the Pages 2; 4 and 6.

20. Cut three  $4\frac{3}{8}$ " x  $6\frac{3}{8}$ " pieces of *Upper Crust* (B-side) and add it to the Pages 1; 3 and 5. Cut the



card shown of *Crème de la Crème*, trim out the border and add it to the Page 1. Open the page 1 and add the element shown of *Crème de la Crème*.



21. Cut two  $1\frac{1}{8}$ " x  $3\frac{3}{4}$ " pieces of *Petits Fours* as shown and add them to both wa-

terfall straps. Cut a couple of elements shown of *Crème de la Crème* and add it to both waterfall straps two.

## • Third Cover Panel

22. Cut a  $7\frac{1}{8}$ " x  $7\frac{3}{8}$ " piece of *Postage Patisserie* (B-side) and add it to the third cover panel. Cut a  $6\frac{3}{8}$ " x 7" piece of *Café Parisian* (cut it from the upper left corner of the paper. We are going to do a pocket with this piece scor-

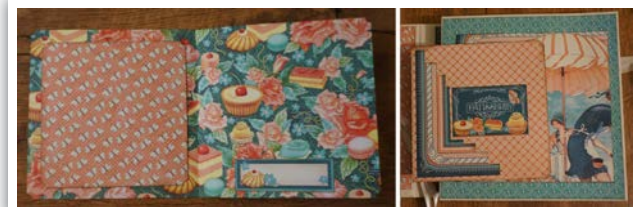


ing a line at  $\frac{1}{2}$ " from the top and bottom edges and at  $\frac{1}{2}$ " from the right edge, trim the right corners, fold the score sections, and add it to the third cover panel centered between top and bottom edges and at  $\frac{1}{2}$ " from the right edge.

23. Cut a piece of 11" x  $5\frac{1}{2}$ " of *Confectionery*, fold it by the middle on the 11" direction and trim



or round the corners. This is a folder. Take the corner trimmed of the *Café Parisian* and add it to the left side of the front page of the folder, as shown, then, add the "Patisserie" card of *Crème de la Crème* and add it to the front page of the folder.



24. Cut a  $4\frac{3}{4}$ " x  $4\frac{3}{4}$ " piece of *Crepe Suzette*, trim or round the corners, open the file and add it to the left page. Add the element shown of *Crème de la Crème* to the bottom of the right page. Insert the bottom page into the pocket of the third cover panel.

Congratulations!  
You have completed  
your Café Parisian  
Waterfall Folio Album!

