



Mon Amour – Quad-Folio Interactive Album

Designed by ~ Carla La Vera

Graphic 45® Supplies:

- | | |
|---|-----------|
| 1 pk Mon Amour 12 x 12 Collector's Edition | (4502537) |
| 1 pk Mon Amour Chipboard | (4502539) |
| 1 pk G45 12 x 12 Chipboard Sheets—Black (10 pack) | (4501808) |
| 1 ea G45 Antique Brass Ornate metal Key Holes | (4500546) |

Tools, Adhesives & Ink:

Paper trimmer, detail scissors, ruler, scoring tools, craft knife, bone folder, ruler, pencil, corner rounder, various adhesives
Opt: brown ink and applicator, matching twine or ribbon

Notes:

- We will be using the packaging page from the DCE do not discard.
- When cutting papers, be mindful of the pattern direction.
- All measurements are width x height, unless specified.
- For a fun, detailed video tutorial, visit our YouTube page!



— Quad-Folio Interactive Album —

Directions:

- Cover

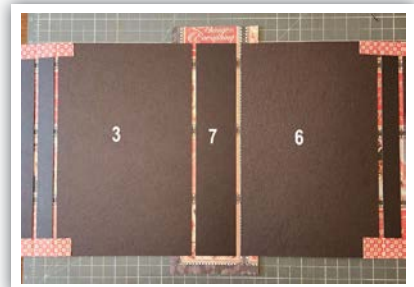


1. From Black Chipboard cut the following pieces:

- 1: 5 3/4" x 9", • 2: 3/4" x 9", • 3: 5 7/8" x 9", • 4: 5 3/4" x 9",
- 5: 3/4" x 9", • 6: 5 7/8" x 9", and • 7: 1 3/4" x 9".

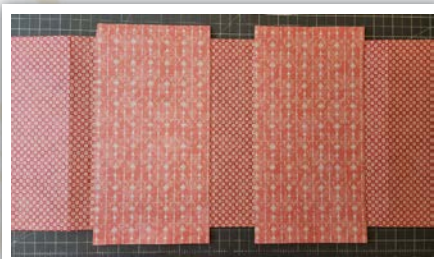
Cut two 8 1/2" x 10 1/2" pieces of *Forever Mine*, flip it over these pieces and add the chipboard pieces shown in the picture leaving 1/8" between each piece. Trim the corners as shown and add the borders of the paper to the chipboard pieces. Create a crease between the chipboard pieces by pressing slightly with a bone folder.

2. Cut a 3 1/2" x 10 1/2" piece of *Forever Mine* and the chipboard piece 7 by the middle and beside the pieces 3 and 6 as shown. Leave 1/8" between the chipboard pieces, then, add the



borders. Create a crease with a bone folder.

Mon Amour – Quad-Folio Interactive Album



3. Cut two $5\frac{5}{8}$ " x $10\frac{1}{2}$ " pieces of *Heart's Desire* (B-side), flip over the cover and add them to the Pieces 3 and 6 of the cover, then,

fold the top and bottom borders and add them to the chipboard pieces.

4. Cut a $3\frac{1}{2}$ " x $8\frac{3}{4}$ " piece of *True Love* (B-side) and add it to the middle



spine of the cover. Press slightly with a bone folder by the joins. Cut two 2" x $8\frac{3}{4}$ " pieces of *True Love* (B-side) and add it to the narrow spines.



5. Cut a 5" x 5" piece of *True Love* (B-side) and add it to a piece of 5" x 5" of black chipboard, then, add it to the front cover leaving $\frac{1}{4}$ " from the upper edge.

Fussy cut the element shown of *Mon Amour* and add it to the front cover with pieces of chipboard for volume.

6. Fussy cut the flowers of the bottom of *Mon Amour* and add them to the bottom of the front cover. Trim it to keep the same width of the Piece *Heart's Desire* as shown. Fussy cut the "Mon Amour" label of *Mon Amour*, add it to a piece of chipboard, then, add it to the front cover.



7. Add the Keyhole to the front cover (use a metal adhesive). Take the chipboard piece shown and insert a piece of ribbon by the holes



(30" each), then, add the chipboard piece to the back cover and use the ribbon to close the album. We've got the Quad-fold Album Cover ready.



8. Open the quad-fold album (only the front cover). Cut a $2\frac{1}{2}$ " x $8\frac{3}{4}$ " piece of *Precious One* (B-side) and add it to the left section of the quad-fold album. Cut the square with the quote shown of *Forever Mine* and add it to the left section, at $\frac{1}{4}$ " from the right edge, finally Fussy cut the lady of *Mon Amour* and add it to the right section.

9. Cut a $5\frac{1}{4}$ " x 3" piece of *True Love* (B-side), apply adhesive only on the lateral and bottom edges (as a pocket) and add it to the right section and insert the card shown of *My Beloved*. Cut the element shown of *Mon Amour* and add it to the pocket only, then, take the chipboard piece shown, insert a piece of twine, make a bow, and add it to the pocket.



If we open both sides of the album we have four sections, we will start to work from left to right. For an easy understanding I'm going to name them as section 1, section 2, section 3 and section 4.

Mon Amour – Quad-Folio Interactive Album

• Section 1



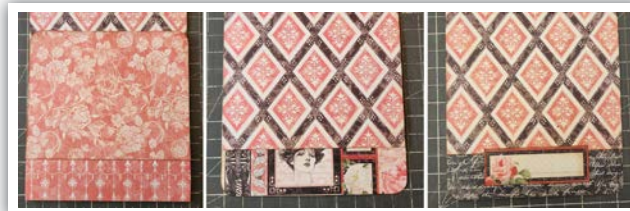
10. Cut a $5\frac{5}{8}$ " x $8\frac{3}{4}$ " piece of *Heart's Desire* and add it to section 1. Cut two $1\frac{1}{2}$ " x 4" pieces of *Forever Mine* and score a line at $\frac{1}{2}$ ", $\frac{3}{4}$ " and 1" on the $1\frac{1}{2}$ " direction. Cut a $1\frac{1}{8}$ " x $5\frac{1}{2}$ " piece of *Forever Mine* and score a line at $\frac{1}{2}$ ", $\frac{3}{4}$ " and 1" on the $1\frac{1}{2}$ " direction. Fold these pieces and trim the corners as shown. Cut a $5\frac{1}{2}$ " x 4" piece of black chipboard and add the pieces folded to the chipboard piece as shown. It will be a pocket.

11. Add the pocket to section 1. Cut a $5\frac{3}{8}$ " x $3\frac{7}{8}$ " piece of *True Love* (B-side) and add it to the pocket. Cut a 2" x 3" piece of *One and Only* (B-side) paper and add it to the pocket, then, add the Chipboard piece shown.

12. Cut a 5" x 12" piece of *Heart's Desire* and score a line at 4" on the 12" direction. Cut a 5" x $1\frac{1}{2}$ " piece of *Forever Mine* and fold it by the middle in the $1\frac{1}{2}$ " direction, trim the corners. Cut "My Beloved



card of *My Beloved* and trim the lateral edges to get 5". Add the *Forever Mine* piece underneath the bottom edge of the card, then, add the *Forever Mine* piece underneath the top edge of the *Heart's Desire* piece. This is a top flap. Cut the card shown, trim it to get 5" and add it to the top flap. Round the corners.



13. Cut a 5" x 4" piece of *One and Only* (B-side) paper and add it to the 4" bottom section leaving $1\frac{1}{4}$ " from the bottom edge. Cut a 5" x $1\frac{1}{4}$ " piece of *True Love* (B-side), open the bottom flap and add it to the bottom section. Round the corners. Cut the element shown of *One and Only* and add it to the bottom flap.



14. Take the chipboard piece shown and insert a piece of twine (14") and add this piece to the top flap centered between the

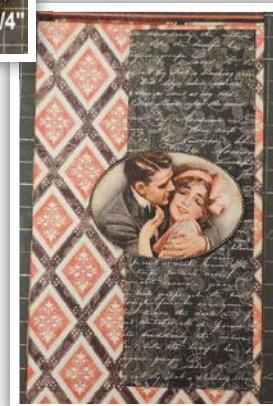
lateral edges and leaving $\frac{1}{4}$ " from the bottom edge.

Take the second chipboard piece shown, flip it over and add a little rounded piece of chipboard (use a strong adhesive), then, apply adhesive on the small round and add it to the bottom flap, line up this piece with the chipboard piece on the top flap. Wrap the twine around the bottom piece to close the folder.



15. Cut a $3\frac{1}{2}$ " x $9\frac{1}{4}$ " piece of *True Love* (B-side) and score a line at $\frac{3}{4}$ ", then

score a second line at $8\frac{5}{8}$ " on the $9\frac{1}{4}$ " direction. Score another line at $2\frac{3}{4}$ " on the $3\frac{1}{2}$ " direction. Fold the score sections, trim the corners as shown and add this pocket to the main section of the folder. Cut the cards shown, trim the rounded image, add it to a piece of chipboard, then, add it to the pocket.



Mon Amour – Quad-Folio Interactive Album



16. Cut a 7" x 6³/₈" piece of *Dearest Darling* and score a line at 2¹/₂" on the 7" direction. Fold this folder. Cut the squares shown (*Forever Mine*) and apply adhesive only on the left and partially on the top and bottom edges. The idea is to get a pocket. Add this piece to the top page of the folder, then, insert behind a couple of squares (*Forever Mine*). Insert the folder into the big pocket.



17. Cut a 5" x 8" piece of *True Love* (B-side) and add it at the back of the folder, then, add a couple of squares (*Forever Mine*) as

shown. Insert the Folder into the pocket of Section 1.

• Section 2

18. Cut a 5⁵/₈" x 8³/₄" piece of *Precious One* (B-side). Cut a 5" x 4¹/₂" piece of *Dearest Darling*. Add a piece of twine (or ribbon if you prefer) to the *Precious*



One piece leaving 4" from the bottom edge, then, round the bottom corners of the Piece 5" x 4¹/₂" and add it to the *Precious One* leaving 1¹/₂" from the bottom edge.



19. Cut four 5" x 5" pieces of *Dearest Darling* and score a line at 4¹/₂" on the main direction (two by side) Fold the 1/2" score section (we are going to do a waterfall, use two pieces for each side of the paper) Round the bottom corners and add the score section of one piece (opposite side of the paper) over the upper edge of the 5" x 4¹/₂" piece added. Continue with the remaining three pieces.



20. Cut the card shown (*One and Only*) and add it to a piece of chipboard, then, add it to the first flap of the waterfall. Add the Chipboard piece "Forever and Always" and add it to the upper side of the *Precious One* piece, then, add this piece to the Section 2 of the quad-fold.

• Section 3



21. Cut a 9¹/₂" x 8¹/₂" piece of *Precious One* and score a line at 3/4" then score other line at 5³/₄" on the 9¹/₂" direction. Make a mark on the right edge at 2" from the upper edge and trim a line between the top left corner of the left edge and the mark on the right edge. Fold the 3/4" section under the score line and the 3³/₄" section upon the score line. Cut a 9¹/₂" x 8¹/₂" piece of *Heart's Desire* and score a line at 3/4" then score other line at 8³/₄" in the 9¹/₂" direction, then, trim the top edge as we did on the *Precious One* piece but in the opposite direction.

Mon Amour – Quad-Folio Interactive Album



22. Cut a $5\frac{5}{8}$ " x $8\frac{3}{4}$ " piece of *True Love*. Take the *Heart's Desire* piece and add the $\frac{3}{4}$ " section underneath the left edge of the *True Love* piece. Take the *Precious One* piece and add the $\frac{3}{4}$ " section underneath the right edge of the *True Love* Piece.



23. Take the Chipboard pieces shown (tabs), add a piece of left-over underneath as shown and add them to both $3\frac{3}{4}$ " sections. Cut the card shown (*One and Only*), fussy cut it as shown and add it to the front page of the left flap. Open it to the right and add the square piece shown (*Forever Mine*) to the right section.

24. Cut a 4" x 6" piece of *True Love* (B-side) and add it to the left section, then, fussy cut the quote of the square shown



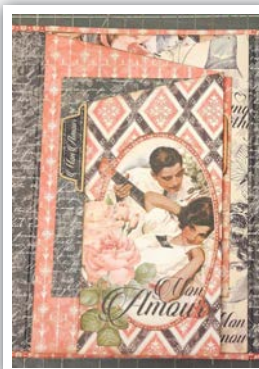
(*Forever Mine*) and add it to the left section.

25. Open the left flap to the left. Cut a $4\frac{3}{4}$ " x 2" piece of *True Love* (B-side), apply adhesive on the lateral and bottom edges and add it to the left flap, this is a pocket.

Add the square shown (*Forever Mine*) and insert the card (*One and Only*).



27. Open the right flap to the right. Cut a $4\frac{3}{4}$ " x 2" piece of *Dearest Darling* (B-side), apply adhesive on the lateral and bottom edges and add it to the right flap, this is a pocket. Add the square shown (*Forever Mine*) and



insert the card (*My Beloved*).

28. Add this folio to the Section 3 of the quad-fold.

• Section 4

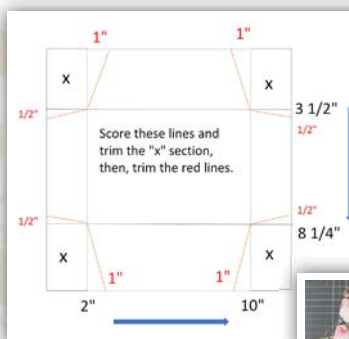


29. Cut a $5\frac{5}{8}$ " x $8\frac{3}{4}$ " piece of *Dearest Darling* and add it to section 4. Cut two $1\frac{1}{2}$ " x 4" pieces of *Forever Mine* and score a line at $\frac{1}{2}$ ", $\frac{3}{4}$ " and 1" on the $1\frac{1}{2}$ " direction. Cut a $1\frac{1}{2}$ " x $5\frac{1}{2}$ " piece of *Forever Mine* and score a line at $\frac{1}{2}$ ", $\frac{3}{4}$ " and 1" on the $1\frac{1}{2}$ " direction. Fold these pieces and trim the corners as shown. Cut a $5\frac{1}{2}$ " x 4" piece of black chipboard and add the pieces folded to the chipboard piece as shown. It will be a pocket.

Mon Amour – Quad-Folio Interactive Album



30. Add the pocket to section 4. Cut a $5\frac{5}{8}$ " x $3\frac{7}{8}$ " piece of *True Love* (B-side) and add it to the pocket. Cut the card shown (*My Beloved*) and fussy cut it as shown, then, add it to the pocket.



corners as shown. Fold it and adhere the bottom flap to do an envelope.



31. Take a 12" x 12" *Dearest Darling* and score the lines shown in the design attached, cut out the sections indicated and round the



32. Cut a $6\frac{1}{2}$ " x 2" piece of *True Love* (B-side), tear the top edge and add it to the front section of the envelope, then, cut the card shown (*My Beloved*) and add it too to the front section. Flip over the envelope and add a Keyhole to the top flap of the envelope.



33. Cut a 12" x $4\frac{1}{4}$ " piece of *Precious One*. Place the main side up and score a line at $3\frac{3}{4}$ " and at $9\frac{1}{2}$ " on the 12"

direction and fold the lateral sections upon the score lines. Cut a 2" x $4\frac{1}{4}$ " piece of *Dearest Darling*, round the left corners. Cut the card shown (*My Beloved*) and add it over the left section of the right flap and the right section of the 2" x $4\frac{1}{4}$ " piece. Let 1" between both pieces before adding the card.

34. Add the small square with roses design (*One and Only*) and add it to

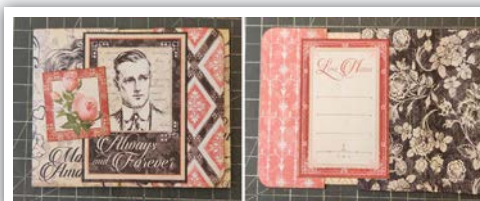


the right flap. Open the right page and add the card shown (*One and Only*) matching with the card on the front. Insert it into the envelope.



35. Cut a 12" x $4\frac{1}{4}$ " piece of *Precious One*. Place the opposite side up and score a line at $2\frac{1}{2}$ " and at $8\frac{1}{4}$ "

on the 12" direction and fold the lateral sections upon the score lines. Cut a 2" x $4\frac{1}{4}$ " piece of *Heart's Desire*, round the right corners. Cut the card shown (*My Beloved*) and add it over the right section of the left flap and the left section of the 2" x $4\frac{1}{4}$ " piece, as shown.



36. Add the small square with roses design shown above

(*One and Only*) and add it to the left flap. Open the left page and add the card shown (*My Beloved*) matching with the card on the front. Insert it into the envelope.

37. Insert the envelope into the pocket of Section 4 and you're all finished!

