

FLOWER MARKET

G45 Album Kit

2023 Vol. 1: Flower Market

Flower Market – A-Frame Monthly Calendar



— A-Frame Monthly Calendar —

Designed by ~ Carla La Vera

Graphic 45® Supplies:

1 pk Flower Market 12 x 12 Collection Pack	(4502558)
1 pk Flower Market Chipboard	(4502560)
1 pk Flower Market Ephemera Assortment	(4502563)
1 pk 12 x 12 Chipboard Sheets—Kraft (10 pack)	(4501807)
1 pk G45 Antique Bronze Binder Rings	(4502591)

Tools, Adhesives & Ink:

Paper trimmer, detail scissors, ruler, scoring tools, craft knife, bone folder, ruler, pencil, hole punch, pencil, various adhesives
Opt: brown ink and applicator, matching twine

Notes:

- A link for the special cutting instructions can be found at G45papers.com under the product page for this kit.
- All measurements are width x height, unless specified.
- For a fun, detailed video tutorial, visit our YouTube page!

Directions:

1. Cut six 7" x 6" chipboard pieces. We are going to share one piece for two months Calendar. The first one is for the front cover and *January*, the second for *February* and *March*... The last one is for *October* and *November*. We will do *December* on the calendar's holder.



2. Cut a 7" x 4 1/4" piece of *January* (special cutting instructions) and add it to the bottom section of the first chipboard piece. Cut a 7" x 1 1/4" piece of *January* and add it to the upper section then, add the butterfly shown from the die-cut assortment.

3. Cut a 7" x 5 3/8" piece of *February* and add it to the upper section of the second chipboard piece. Cut a thin purple border L= 7" and add it below



the *February* paper, add the February Calendar but don't apply adhesive on the right edge. Cut a February Tag, add a small round of chipboard embellishments as shown and insert the tag behind the calendar.

Flower Market – A-Frame Monthly Calendar



of *March* and add it as a pocket. Cut the calendar of *March* and the “New Beginning” label and insert them into the pocket.

5. Cut a 7” x 4 $\frac{3}{4}$ ” piece of *April* (special cutting instructions) and add it to the bottom section of the third chipboard piece. Cut a 7” x 1 $\frac{1}{4}$ ” piece of *April* and add it to the upper section. Add the “Bloom” label and the



butterfly of Ephemera Assortments as shown.



don’t apply adhesive on the left edge. Cut a Humility label and insert it behind the calendar, then, add the chipboard embellishment shown.

6. Flip over the third chipboard piece. Cut a 7” x 5” piece of *May* and add it to the upper section of the second chipboard piece. Cut a thick light blue border L= 7” and add it below the *May*. Add the *May* calendar but

4. Flip over the second chipboard piece. Cut a 7” x 5” piece of *March* and add it to the upper section of the chipboard piece. Cut a thicker green border (L=7”) and add it to the bottom section. Cut the stamps of

7. Cut a 7” x 5” piece of *June* and add it to the upper section of the Fourth chipboard piece. Cut a thicker purple border (L=7”) and add it to the bottom section. Cut the stamps of *June* and add it as a



pocket. Cut the calendar of *June* and the “Love” label and insert them into the pocket.



assortment and the chipboard embellishment piece.

9. Cut a 7” x 5 $\frac{3}{8}$ ” piece of *August* and add it to the upper section of the fifth chipboard piece. Cut a thin pink border L= 7” and add it below the *August*. Add the calendar but don’t apply adhesive on the



right edge. Fussy cut the *August* Tag, punch the hole and insert a piece of twine, then, insert it behind the calendar. Add the die-cut flower shown.

10. Flip over the fifth chipboard piece. Cut a 7” x 5” piece of *September* paper and add it to the upper section of the chipboard. Cut a thicker light blue border (L=7”) and

Flower Market – A-Frame Monthly Calendar



and add it to the bottom section. Cut the stamps of *September* and add it as a pocket. Cut the calendar and the Wisdom label of *September* and insert it into the pocket.

11. Cut a 7" x 4 3/4" piece of *October* paper (special cutting instructions) and add it to the bottom section of the sixth Chipboard piece. Cut a 7" x 1 1/4" piece of *October* and add it to the upper section then. Add the



Joyful and Harmony labels of *October* as shown.

12. Flip Over the sixth chipboard piece. Cut a 7" x 5" piece of *November* and add it to the upper section of the chipboard. Cut a thick green border L= 7" and add it below the *Nov.* Add the calendar but don't apply adhesive on the left edge. Cut the tag shown, punch the hole, insert a piece of



twine, then insert the tag behind the calendar. Add the chipboard piece shown.

13. Cut a 7" x 6 3/4" piece of *Jan, Mar, May, Jul, Sep, and Nov* papers then score a line at 3/4" on the 6 3/4" direction and fold the 3/4" score section under the score line.

14. Cut a 7" x 6" piece of *Feb, Apr, Jun, Aug, Oct, and Dec* papers and add the 3/4" score section of the previous month to the bottom edge of these pieces, that means you must add *Jan* with *Feb*, *Mar* with *Apr*, *May* with *Jun* and so on.



15. Add the upper edges of both pieces of each month and we got a pocket page shared by two months with both lateral sides open.

16. Place the *Jan* side up and punch a half hole by the middle on the right



edge (only *Jan* paper). Flip over and place the *Feb* side up and punch a half hole by the middle on the right edge (only *Feb*). Repeat with all the pocket pages.



17. Cut the 12 monthly flower cards and trim the lateral edges to get width = 4 3/4". Trim the round with the number of the month of the twelve months. Flip

over the *Jan* flower card and add the round No. 1 leaving 1/2" over the upper edge of the card. Do the same with the other 11 monthly cards and insert them into the pocket page of each month.

Flower Market – A-Frame Monthly Calendar



18. Place the *Jan* pocket page in front of you and add the Fascination label and the chipboard embellishment of *Jan*.



23. Add the tag and the rose from the die-cut assortment shown to the *June* pocket page.

19. Add the “Faithful” label from *Feb* and the purple flowers of die-cut ephemera assortments to the pocket page.

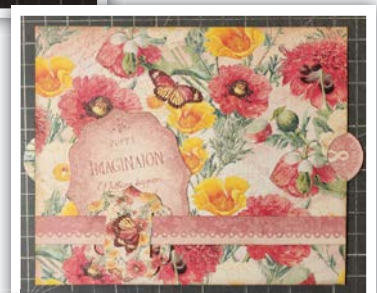


24. Add a “Laughter” and “Sweetness” label to the *July* page as shown.



20. Add the tag and the chipboard embellishment shown to the March pocket page.

25. Cut a thin pink border (L=7) and insert it through the die-cut assortment piece and add it to the *Aug* pocket page. Insert the “Imagination” label behind as shown.



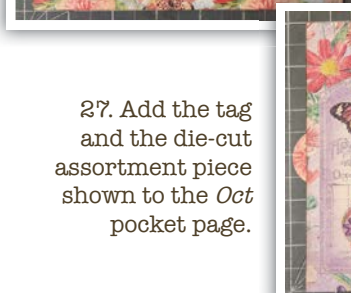
21. Add the *April* tag and stamp to the *April* pocket page.



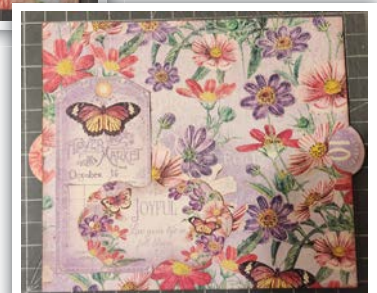
26. Add the tag and the flowers of shown to the *September* pocket page.



22. Add the “Devotion” label to the *April* pocket page applying adhesive on the lateral and bottom edges, then, insert the stamps behind the label as shown.



27. Add the tag and the die-cut assortment piece shown to the *Oct* pocket page.



Flower Market – A-Frame Monthly Calendar



28. Fussy Cut the butterfly with the green border shown and add it as a belly band to the left section of the *Nov* pocket page, add a stamp to the bottom section and insert the die-cut element shown behind the belly band.

29. Add the “Good Luck” label of chipboard embellishment to the *Dec* pocket page as shown.



30. Cut a 5" x 6" piece of *April* and add it to the right side of the first Chipboard piece (back of *January*). Cut two pieces of thicker pink border (L= 6") and add them to the left side as shown. This is the front cover of the calendar's holder.

31. Cut the *May* tag and add it to a piece of chipboard, then add it to the front cover leaving $\frac{3}{4}$ " from the top edge and $1\frac{5}{8}$ " from the left edge. Add the clock and the *April* flowers of the die-cut assortments as shown.



32. Add the Joyful chipboard embellishment to the front cover leaving $\frac{3}{8}$ " from the right edge and $1\frac{1}{2}$ " from the bottom edge and add a butterfly of Ephemera

Assortments as shown. Finally, Cut the Symbol of Love label of *September*, add it to a piece of chipboard then add it to the front cover leaving $\frac{3}{4}$ " from the right edge and $1\frac{1}{8}$ " from the bottom edge.



33. Cut two 7 $\frac{1}{2}$ " x 7" pieces of the Chipboard Sheets and a 7 $\frac{1}{2}$ " x 4 $\frac{5}{8}$ " piece of the Chipboard sheets. We are going to use these pieces for the Calendar's Holder. Cut two 2" x 9 $\frac{1}{2}$ " pieces of *January* and add the chipboard pieces as shown, then, cut two 2" x 7" pieces of *July* paper and add them to the opposite side of the chipboard pieces.

34. Cut a 4 $\frac{1}{2}$ " x 5" piece of *March* and a 4 $\frac{1}{2}$ " x 2 $\frac{1}{2}$ " piece of *November* and add them to the 4 $\frac{5}{8}$ " calendar's holder as shown.

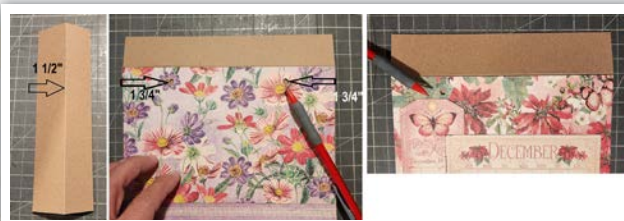
35. Cut a 7 $\frac{1}{2}$ " x 6" piece of *December* and add it to the upper section of the front calendar's holder. Cut a thick pink border (L=7 $\frac{1}{2}$ ") and add it to the bottom side. Cut the tag shown and add it to the left side. Cut the *December* calendar and add it to the Calendar's holder, then, add the Ephemera Assortment of *December* to the bottom left corner of the calendar.



Flower Market – A-Frame Monthly Calendar



36. Cut a $7\frac{1}{2}$ " x 5" of *Oct* and add it to the upper section of the calendar's holder, then, cut a piece of thick purple border (L= $7\frac{1}{2}$ "") and a piece of thin purple border (L= $7\frac{1}{2}$ ""), then, add them below the *Oct* piece as shown.



37. Cut a $7\frac{1}{2}$ " x 3" piece of Chipboard Sheets and slightly make a surface cut at $1\frac{1}{2}$ " on the 3" direction, only to allow the piece to fold.

38. Punch a couple of holes on the free edge of the calendar's holder as shown, then, place the piece of step 37 underneath the upper edges of both free edges of the calendar's holder, mark the holes and punch them. Add the reinforcement piece (step 37) underneath the upper edges of the calendar's holder as shown above.



39. Punch a couple of holes on the top edge of the 7" x 6" chipboard pieces with the calendars and the pocket pages. These holes must match the holes on the calendar's holder. Insert a couple of rings through the holes.



40. Cut a $7\frac{1}{2}$ " x $6\frac{3}{8}$ " piece of chipboard and make a superficial cut at $1\frac{1}{4}$ " and at $5\frac{1}{8}$ " in the $6\frac{3}{8}$ " direction and

fold the $1\frac{1}{4}$ " sections as shown. Cut a 5" x $3\frac{7}{8}$ " piece of *May*, cut a $1\frac{3}{4}$ " x $3\frac{7}{8}$ " piece of *July* and add them to the lateral edges of the chipboard piece, then, cut a piece of thin green border (L= $3\frac{7}{8}$ "") and add it to the chipboard. Insert this chipboard piece into the calendar's holder.

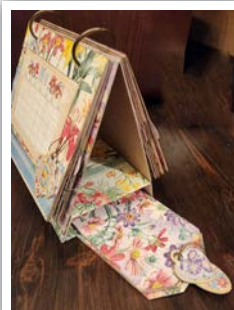
41. Cut a $3\frac{3}{4}$ " x 7" piece of each month's papers and add *Jan* with *Feb* applying adhesive only on the upper, bottom, and left edge and let the right edge open as a pocket. Repeat



with the remaining ten months. These will be tags.



42. Trim the upper corners of the tags and punch a hole by the middle of the upper edge. Use a ring to keep these tags together.



43. There are many remaining embellishments that you can use to decorate your tags as you prefer. Some suggestions are shown above.

Insert the tags inside the base of the calendar holder as shown.