

Make a Splash — Pop-Up Card Set



— Make a Splash Pop-up Card Set —

Directions:

~ General Directions



Designed by ~ Carla La Vera

Graphic 45® Supplies:

1 ea Make a Splash 8" x 8" Paper Pack	(4502666)
1 pk Make a Splash Ephemera Assortment	(4502670)
1 ea Lovely Lilac Hybrid Inkpad	(4502393)
1 pk 4¼" x 5½" Cards and Envelopes—Ivory	(4502652)

Additional Supplies, Tools, Adhesives & Ink:

Paper trimmer, detail scissors, scoring tools, bone folder, ruler, corner punch, craft knife, various adhesives, foam adhesive

Notes:

- For a fun, detailed video tutorial, visit our YouTube page!
- Measurements are width x height unless specified.
- The following instructions are for three cards. Use the remaining supplies provided in your kit to create three additional cards by following the steps using other papers!

1. Fold two cards inside out and place both horizontal with the open side to the left.
2. Take a piece of cardstock or if you prefer to use the cover of the pack and tear it as shown (making waves), place it over the first card and ink the bottom section using the amazing Lovely Lilac Hybrid Inkpad.
3. Place the cardstock about ¼" far of the first waves and you can change the position of the waves and ink again. Do the same one more time as shown. In Total we did 3 levels of waves. Follow these instructions for two cards.
4. For the horizontal card, place it with the open side to the bottom, open the top flap and make the same waves but on the bottom section of the card.
5. Make the same waves on the envelopes, cut a 5½" x 2" piece of *Shellabrate*, *Fantasy Cove* and *Born to Be a Mermaid* and make a mark at ¼" from the bottom corners then, trim a line between the upper corners and the bottom corners, add them to the flap of the envelopes, then, add a small card of *The World is your Oyster*. Match the envelopes with the cards.

~ Framed Card No. 1

1. Cut a 4½" x 5½" piece of *Shellabrate* and add it to the front of the card. Cut a 3" x 4" piece of *Ocean Dance* (B-side) and add it to the front of the card centered between the lateral edges and leaving ½" from the upper edge.
2. Cut a 3½" x 4½" piece of *Make a Splash* (B-side) and trim a frame as shown. Save the inside of the frame (we will use it in step 7). Add the frame to the Card with foam dots to give it volume, then, add the Clock to the frame.
3. Take the mermaid shown and add it behind the frame but let the hand over the frame to give a 3D effect, then, add the tag shown to the bottom section of the frame.

Make a Splash – Pop-Up Card Set



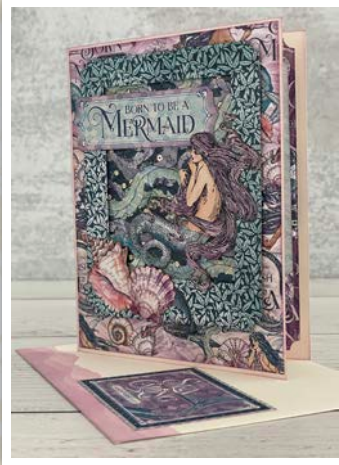
4. Open the card and add a seahorse to the section with the waves. Cut a $3\frac{7}{8}$ " x $5\frac{1}{4}$ " piece of *Shellabrate* (B-side), trim the corners and add it to the right section of the card.

5. Take the *Wish Upon a Starfish* and trim the border shown (L= $5\frac{3}{8}$ "). Score three lines: at $\frac{5}{8}$ "; $4\frac{1}{8}$ " and $4\frac{3}{4}$ " on the $5\frac{3}{8}$ " direction and fold it as shown.

6. Apply adhesive to the $\frac{5}{8}$ " of the left and add it to the left section of the card (centered between the top and bottom edges and close to the folding line of the card). Apply adhesive on the $\frac{5}{8}$ " section of the right and add it to the right section of the card keeping the border flat.

7. Take the middle piece of the frame that we cut on step 2 and add it to the border of step 6, then, add the card of *The World is your Oyster* to the border.

~ Framed Card No.2



1. Cut a $4\frac{1}{8}$ " x $5\frac{3}{8}$ " piece of *Fantasy Cove* and add it to the front of the card. Cut a 3 " x 4 " piece of *Ocean Dance* and add it to the front of the card centered between the lateral edges and leaving $\frac{1}{2}$ " from the upper edge.

2. Cut a $3\frac{1}{2}$ " x $4\frac{1}{2}$ " piece of *Ocean Dance* (B-side) and trim a frame as shown. Save the inside of the frame. Trim the corners of the frame and add it to the Card with foam dots to give it volume, then, add the label shown over the left side of the frame.

3. Take the mermaid shown and add it to the center of the frame but her hair and tail over the frame. Add a couple of seashells to the bottom left corner of the frame.

4. Open the card and add a fish to the section with the waves. Cut a $3\frac{7}{8}$ " x $5\frac{1}{4}$ " piece of *Fantasy Cove* (B-side), trim the corners and add it to the right section of the card.

5. Take the *Wish Upon a Starfish* and trim the border shown (L= $5\frac{3}{8}$ "). Score three lines: at $\frac{5}{8}$ "; $4\frac{1}{8}$ " and $4\frac{3}{4}$ " on the $5\frac{3}{8}$ " direction and fold it as shown.

6. Apply adhesive to the $\frac{5}{8}$ " of the left and add it to the left section of the card (centered between the top and bottom edges and close to the folding line of the card). Apply adhesive on the $\frac{5}{8}$ " section of the right and add it to the right section of the card keeping the border flat.

7. Take the middle piece of the frame that we cut on step 2 and add it to the border of step 6, then, add the card of *The World is your Oyster* to the border as shown.



~ Framed Card No.3

1. Cut a $5\frac{3}{8}$ " x $4\frac{1}{8}$ " piece of *Born to Be a Mermaid* and add it to the front of the card. Cut a 4 " x 3 " piece of *Ocean Dance* (B-side) and add it to the front, centered between the lateral edges and leaving $\frac{1}{2}$ " from the upper edge.

2. Cut a $4\frac{1}{2}$ " x $3\frac{1}{2}$ " piece of *Seas the Day* (B-side) and trim a frame as shown. Save the inside of the frame. Add the frame to the Card with foam dots to give it volume, then, add the purple frame shown.

3. Take the mermaid shown and add it to the center of the frame but her hands over the frame and her tail underneath the frame. Add the Mermaid banner to the bottom of the frame and a starfish to the bottom right corner of the frame.



Make a Splash – Pop-Up Card Set



4. Open the card and add a fish to the section with the waves. Cut a $5\frac{1}{4}'' \times 3\frac{7}{8}''$ piece of *Born to Be a Mermaid* (B-side) trim the corners and add it to the upper section of the card.

5. Take the *Wish Upon a Starfish* and trim the border shown (L= $5\frac{3}{8}''$). Score three lines: at $\frac{5}{8}''$; $4\frac{1}{8}''$ and $4\frac{3}{4}''$ on the $5\frac{3}{8}''$ direction and fold it as shown.

6. Apply adhesive to the $\frac{5}{8}''$ of the left and add it to the bottom section of the card (centered between the lateral edges and close to the folding line of the card. Apply adhesive on the $\frac{5}{8}''$ section of the right and add it to the upper section of the card keeping the border flat.

7. Take the middle piece of the frame that we cut on step 2 and trim it to get $2\frac{1}{4}'' \times 2\frac{1}{2}''$, add it to the border of step 6, then, take the card shown of *The World is your Oyster* and trim the top edge to get H= $3\frac{7}{8}''$ and add it to the border as shown.

You can complete an additional three cards following the same steps using other paper from the collection!

- Find details on the Graphic 45 YouTube Channel •

