



G45 Workshop

Featuring: Flower Market

Flower Market – Interactive Folio Album



— Interactive Folio Album —

Designed by ~ Carla La Vera

Graphic 45® Supplies:

1 pk Flower Market 12 x 12 Collector's Edition	(4502558)
1 pk Flower Market Flower Assortment	(4502562)
1 ea Interactive Album—Ivory	(4502566)
1 ea G45 Staples Matte Pearl Gems	(4501809)

Tools, Adhesives & Ink:

Paper trimmer, detail scissors, ruler, scoring tools, craft knife, bone folder, ruler, pencil, corner rounder, craft knife, small hole punch $\frac{3}{16}$ " (larger hole on crop-a-dile), hot glue, various adhesives
 Opt: brown ink and applicator, twine for the tag on the cover

Notes:

- When cutting papers, be mindful of the pattern direction.
- All measurements are width x height, unless specified.

Directions:



1. We are going to assemble the interactive album. Open the trifold album, take the small pockets and adhere the left small pocket $\frac{1}{2}$ " from the top as shown. Adhere the left large pocket before adhering the right small pocket so you can line up the bottom pocket edges.

2. Add the big pocket pages beside each small pocket as shown.



The waterfalls will be added after they are decorated.



3. Cut a $5\frac{7}{8}$ " x $8\frac{7}{8}$ " piece of *February* paper. Cut the calendar of December and add it to the $5\frac{7}{8}$ " x $8\frac{7}{8}$ " piece $\frac{1}{2}$ " from the bottom edge.

Flower Market – Interactive Folio Album



4. Cut 2 pieces of a thicker blue border with length= $5\frac{3}{8}$ ", cut two pieces of a thicker pink border with length= $5\frac{3}{8}$ " and two pieces of a thicker purple border with length= $5\frac{3}{8}$ ". Fold these pieces by the middle in the narrow direction and trim the corners as shown.



5. Cut the calendars of the other 11 months. Add the months February and March to the pink border, add April and May to the blue border, add July and June to the purple border, add September and August to the pink border, October and November to the blue border.



7. Cut a $5\frac{3}{8}$ " x $3\frac{5}{8}$ " piece of *February* and add it to the purple border, then, add the January calendar underneath and add this element to the top of the waterfall.

6. Add the free side of the border to the Piece $5\frac{7}{8}$ x $8\frac{7}{8}$ of *February* making a waterfall.



8. Cut the "New Beginnings" and "Optimism" labels from *March* and add them to the top page of the waterfall. Trim the "Optimism" label 3". Use foam dots or chipboard pieces to pop up the "Optimism" label. Add a pink butterfly from the Flower Assortments to the front page of the waterfall as shown.



• Left Section



9. Cut the card with the monthly flowers of January to May. Trim these cards to get final dimensions ($4\frac{3}{8}$ " x $6\frac{3}{8}$ " and a $4\frac{3}{8}$ " x $3\frac{5}{8}$ " pieces of *Feb*, *March*, *April* and *May*, then add them to the waterfall as shown.

10. Cut a $4\frac{3}{8}$ " x $6\frac{3}{8}$ " and a $4\frac{3}{8}$ " x $3\frac{5}{8}$ " pieces of *Feb*, *March*, *April* and *May*, then add them to the waterfall as shown.



11. Cut two narrow purple borders with Length = $8\frac{3}{4}$ " and add them to the lateral edges of the left section of the album, then, add

the first waterfall with January to May flowers.

Flower Market – Interactive Folio Album



12. Add the elements shown of each month to the pages of the waterfall.

- Right Section



13. Cut the card with the monthly flowers of June to Oct. Trim these cards to get final

14. Cut a $4\frac{5}{8}$ " x $6\frac{3}{8}$ " and a $4\frac{3}{8}$ " x $\frac{3}{8}$ " pieces of July, Aug, Sep, and Oct, then add them to the waterfall as shown.



15. Cut two narrow pink borders with Length = $8\frac{3}{4}$ " and add them to the lateral edges of the right section of the album, then, add the second waterfall with June to October flowers.



16. Add the elements shown.

- Right and Left Pocket Page



17. Cut a $1\frac{1}{2}$ " x $8\frac{1}{4}$ " piece of November (trim it from the left side of the paper that we use to cut the decorative elements) and add it to the right side of the right pocket page. Fussy cut the border with the butterfly of November and add it to the bottom side. Cut the Nov flower card ($4\frac{7}{16}$ " x $6\frac{1}{2}$ ") and add it to the right pocket page.

18. Open the right pocket page. Cut a $5\frac{5}{8}$ " x $7\frac{1}{8}$ " piece of November, trace and trim the half round of the top edge and add it to the right page. Cut a thicker green border L= $5\frac{5}{8}$ " and add it to the bottom section of the right pocket page. Trim $\frac{1}{2}$ " off the right side of the November "Loyalty" and adhere to pocket page as shown. Add a die-cut flower.



19. Cut a thicker pink border (L= $5\frac{5}{8}$ ") and add it to the bottom side of the left pocket page. Cut the December flower card ($5\frac{5}{8}$ " x $6\frac{1}{2}$ ") and add it to the pocket page and finally, cut a narrow pink border (L= $5\frac{5}{8}$ "), mark the half round of the top edge, trim it and add this border to the upper section.

Flower Market – Interactive Folio Album

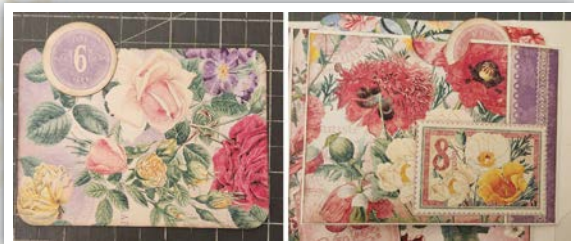


20. Open the left pocket page. Cut a $5\frac{5}{8}$ " x $7\frac{1}{8}$ " piece of *December*, trim the half round of the top edge and add it to the left pocket page. Cut a thicker pink border $L=5\frac{5}{8}$ " and add it to the bottom section of the left pocket page. Adhere sides and bottom of the December stamp to create a pocket, insert the December tag, as shown.

• Small Pockets



21. Cut a $3\frac{5}{8}$ " x $4\frac{3}{8}$ " piece of *Jan*, place it on the right side of the top pocket, mark and cut the half round, then, add it to the pocket front. Cut a thin blue border ($L=4\frac{3}{8}$ ") and add it to the left side of the pocket. Cut the Carnation Card of *January* including the blue border ($4\frac{1}{4}$ " x $7\frac{1}{8}$ "), round the corners, score a line at $2\frac{1}{4}$ " (the picture in the instructions say $2\frac{3}{4}$ " which is now incorrect) from the bottom, fold it and insert it into the pocket. Embellish this pocket with the "Admiration" Label from *January* and a die-cut flower.



22. Open the upper pocket. Cut a $3\frac{5}{8}$ " x $4\frac{3}{8}$ " piece of *August*, place it on the left side of the upper pocket, mark and cut the half round, then, add it to the pocket. Cut a thin purple border ($L=4\frac{3}{8}$ ") and add it to the right side of the pocket. Cut a $4\frac{1}{4}$ " x 4" piece of *August* round the corners, add the No. 8 round of *August* to the top edge of the $4\frac{1}{4}$ " x 4" piece and insert it into the pocket. Embellish this pocket with the stamp of August.



23. Cut a $3\frac{5}{8}$ " x $4\frac{3}{8}$ " piece of *June*, place it on the left side of the bottom pocket, mark and cut the half round, then, add it to the pocket. Cut a thin purple border ($L=4\frac{3}{8}$ ") and add it to the right side of the pocket. Cut a $4\frac{1}{4}$ " x 4" piece of *June* paper round the corners, add the No. 6 round of *June* to the top edge of the $4\frac{1}{4}$ " x 4" piece and insert it into the pocket. Embellish this pocket with the "Passion" label from *June* and the die-cut flower.



24. Open the bottom pocket. Cut a $3\frac{5}{8}$ " x $4\frac{3}{8}$ " piece of *March*, place it on the right side of the bottom pocket, mark and cut the half round, then, add it to the pocket. Cut a thicker green border ($L=4\frac{3}{8}$ ") and add it to the left side of the pocket. Cut the Daffodil card from *March* including the green border ($4\frac{1}{4}$ " x $7\frac{1}{8}$ "), round the corners, score a line at $2\frac{1}{4}$ " (the picture in the instructions say $2\frac{3}{4}$ " which is incorrect) from the bottom, fold it and insert it into the pocket. Embellish this pocket with the stamp of March.

• Folio

25. Round the right corners of the left page of the folio. Cut a 5" x $8\frac{3}{8}$ " piece of *May* round the right corners and add it to the left page of the folio. Cut a thicker pink border ($L=8\frac{3}{8}$ ") and add it to the left page. Apply adhesive only on top and bottom edges. Embellish this page with the May's stamp and insert the May's Tag behind the border and the stamp.



Flower Market – Interactive Folio Album



26. Open the left page. Cut a 5" x 7¹/₈" piece of *October*, round the upper left corner and add it to the upper section of the left page. Cut a thicker green border (L=5"), round the bottom left corner and add it to the bottom section of the left page. Embellish this page with the stamp of October and a die-cut purple butterfly.

27. Round the left corners of the right page of the folio.

Cut a 5¹/₈" x 8³/₈" piece of *April* round the left corners and add it to the right page of the folio. Cut a thicker blue border (L=5") and cut a narrow blue border (L = 5"), then, add both borders to the bottom section of the right page. Apply adhesive only on the lateral edges and on the bottom edge of the thicker border. Leave ¼" between both borders and add on top the "Joyful" Label of April. Insert the Tag of the month behind the borders.



28. Open the right page of the folio. Cut a 5¹/₈" x 8³/₈" piece of *September* round the right corners and add it to the right page. Cut a thicker blue border (L=3¹/₂") and add it to the bottom section of the right page. Trim ½" of the right side of the "Wisdom" Label of September and add it to the right side of the right page. Embellish this page with die-cut flowers.

29. Round the bottom corners of the top flap. Cut a 5³/₈" x 3³/₈" piece of *July* and add it to the top section of the top flap. Cut a piece of thicker green border (L = 5³/₈"), round the bottom corners and add it to the bottom section of the top flap. Embellish this flap with the Sweetness Label of July and a blue die-cut butterfly.



30. Round the top corners of the bottom flap. Cut a 5³/₈" x 4¹/₂" piece of *November*, round the top corners and add it to the bottom flap. Add the "Longevity" Label of November to the top section of the bottom flap as shown.

31. Open the top flap. Fussy cut the element shown of *December*,



round the top corners and add it to the top flap. Add the stamp from Dec to the top flap as shown.



32. Cut a 5³/₈" x 8³/₈" piece of *December* and add it to the center page of the folio. Cut a thicker green border (L=5") and add it to the center page leaving ¼" from the bottom edge, then, add the Foresight Label of December.

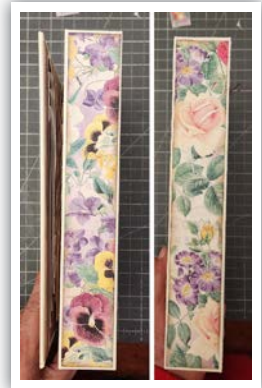
Flower Market – Interactive Folio Album



33. Cut a $5\frac{3}{8}$ " x $3\frac{5}{8}$ " piece of *December* and add it to the upper section of the bottom flap. Take the Good Luck Label of December and trim the bottom section then, add it to the bottom flap as shown.

• Cover

34. Cut a $1\frac{1}{4}$ " x $8\frac{7}{8}$ " of *July* and add it to the right edge of the front cover. Cut a $4\frac{1}{8}$ " x 3" piece of *June* and add it to the upper left section of the front cover. Cut a $4\frac{1}{8}$ " x $1\frac{1}{8}$ " piece of *August* and add it to the front cover, below the June Piece. Cut a $4\frac{1}{8}$ " x $4\frac{5}{8}$ " piece of *May* and add it to the bottom left section of the front cover.



36. Cut a $1\frac{3}{8}$ " x $8\frac{7}{8}$ " piece of *February* and add it to the right spine of the cover. Cut a $1\frac{1}{2}$ " x $8\frac{7}{8}$ " piece of *June* and add it to the left spine of the cover.

37. Cut a piece of thicker purple border (L = $8\frac{7}{8}$ "), add it to the left edge of the back cover. Cut a $3\frac{1}{4}$ " x $8\frac{7}{8}$ " piece of *June* and add it to the right section of the back cover. Cut a $1\frac{1}{2}$ " x $8\frac{7}{8}$ " piece of *Oct* and add it between the border and the June piece.



35. Add the July tag to the front cover with foam dots to give it volume. Add the "Imagination" Label of August to the front cover giving it volume with foam dots. Embellish the cover with roses, leaves and a butterfly from the Flower Assortment, finally, add gold Pearl Gems (different sizes) as shown.