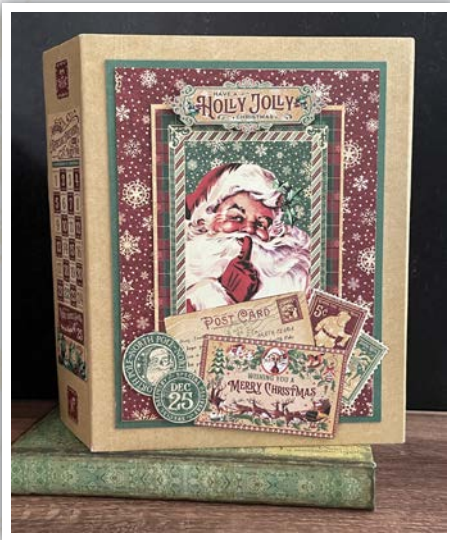




G45 Album Kit

2023 Vol. 10: Letters to Santa

Letters to Santa – Keepsake Album



— Letters to Santa Keepsake Album —

Designed by ~ Maria Cole

Graphic 45® Supplies:

- | | |
|---|-----------|
| 1 pk Letters to Santa 12 x 12 Collection Pack | (4502697) |
| 1 pk Letters to Santa 12 x 12 Patterns & Solids | (4502698) |
| 1 pk 12 x 12 Chipboard Sheets—Kraft | (4501807) |

Tools, Adhesives & Ink:

Paper trimmer, scissors, ruler, scoring tool, bone folder, pencil, craft knife, corner rounder, circle punch, various adhesives, Opt: stamp edge scissors, coordinating ink for distressing

Notes:

- For a fun, detailed video tutorial, visit our YouTube page!
- All measurements are width x height, unless specified.
- When cutting papers, be mindful of the pattern direction.

Directions:



photo. Use a pencil to label the pieces "front," "spine," and "back." From leftover chipboard, cut one $4\frac{1}{8}$ " x $6\frac{1}{8}$ " and save for step 8.

2. Find tan text paper and cut one $10\frac{1}{2}$ " x 11". Use a pencil and ruler to draw a 1" border along the top, right, and bottom sides. Adhere $2\frac{1}{4}$ " x 9" chipboard

1. Take two sheets of chipboard and cut one 7" x 9" from each, along with one $2\frac{1}{4}$ " x 9". Arrange pieces per

flush against the left side, so that it sits on the bottom 1" border line. Adhere the "back" chipboard piece, allowing $\frac{1}{8}$ " space between pieces. Use a bone folder to score the top, right, and bottom edges of the chipboard pieces.



3. Fold along all the score lines. This will create two small scored sections above and below the spine, approximately $2\frac{3}{8}$ " x 1" each. Carefully cut out both sections.

Letters to Santa – Keepsake Album



4. Locate your second sheet of tan text paper and cut a 10⁵/₈" x 11"; draw a 1" border along the top, left, and bottom sides. Score

all the sides of the chipboard. Adhere "front" chipboard piece along the left and bottom 1" borders. Next, adhere the spine 1/8" to the right of the "front" piece, ensuring that the chipboard pieces are aligned.

5. Draw a diagonal line in each of the four corners of your paper. The lines should be just under 1/8" from the corner of the chipboard pieces. Cut along all four lines.

6. Fold paper along all the score lines. For the spine, since the 1" top and bottom score lines are already cut on the right side, you will need to cut the 1" top and bottom score lines on the left side of the spine to allow

for easier opening and closing. Adhere paper over the chipboard, then gently run a bone folder

along the spine's score lines.

7. Take a sheet of chipboard and cut two 6" x 8". Locate green text paper (B-side) cut two 6" x 8"; adhere over chipboard. Save leftover paper for step 15. Find another sheet of chipboard and cut two 5⁵/₈" x 7⁵/₈". Find red snowflake paper and cut two 5⁵/₈" x 7⁵/₈"; adhere over chipboard. Center and adhere over green paper.



8. Take *Letters to Santa* and fussy cut "Have a Holly Jolly Christmas," postcards, calendar, and two green

postmarks. Find *Holly Jolly Express* and remove the 4¹/₈" x 6¹/₈" Santa image; adhere 4¹/₈" x 6¹/₈" chipboard underneath. Save both papers for future fussy cutting. Take *North Pole Postage* and cut off a strip of stamps; cut two with stamp edge scissors and save remaining paper for steps 40 and 44.



9. Flip album over to its tan paper side. Center and adhere red snowflake

mats on the back and front covers. Adhere calendar and attach two small red square stickers to the spine. Adhere remaining images to the front cover, attaching "Have a Holly Jolly Christmas" with foam adhesive.

10. Take two sheets of *Seasons Greetings* and cut one 12" x 8¹/₂" strip from each. Cut both strips to 8¹/₄" x 8¹/₂". Save leftover 3¹/₂" x 12" strips for step 28.

Flip album back to the chipboard side. Starting with the inside back cover, place one paper along the right side so that there is a 1/4" tan border along the top,

right, and bottom. Gently score along the spine, then adhere.

11. Repeat for the left side of the paper.

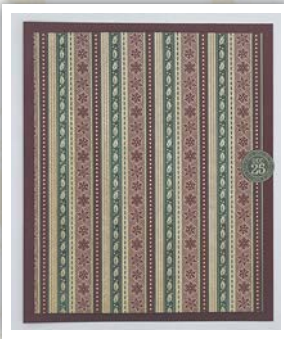


Letters to Santa – Keepsake Album



12. Find your second sheet of red snowflake paper and cut one $4\frac{1}{2}$ " x 12"; trim to $4\frac{1}{2}$ " x $8\frac{1}{2}$ ". Save leftover paper for step 18. Score every half inch; there will be nine $\frac{1}{2}$ " sections. Fold and adhere the 3rd and 4th sections together; repeat for the 6th and 7th. Then, fold up the 1st and 9th sections until your paper looks like the photo.

13. Center and adhere over the inside spine.



14. Find *Holiday Cheer* (B-side) and cut a 12" x $6\frac{3}{4}$ "; cut this piece into two $5\frac{1}{2}$ " x $6\frac{3}{4}$ ". Score $\frac{1}{2}$ " from the left

vertically. Locate red text paper (B-side) and cut a 12" x $7\frac{1}{4}$ "; cut into two 6" x $7\frac{1}{4}$ ". Adhere only the scored sections of *Holiday Cheer* (B-side) onto the red paper. Attach green circle stickers to the front and back of the striped paper. Save leftover papers for step 20.

15. Take leftover green pattern paper from step 7 and cut two 2" squares.



Cut each in half diagonally, then adhere only the top and bottom edges to the album's four inside corners. Insert booklets into the green triangles. Take two 3" x 4" images from *Sweets and Treats*, score $\frac{1}{2}$ " from the top horizontally, and adhere onto booklets.

16. Find *Naughty or Nice* and cut off one 12" x 4" strip; cut into two 6" x 4". Take your second sheet of green text paper and repeat; save leftover paper from both

sheets for step 37. Remove 6" x 4" "Santa's Special Delivery" from leftover *Sweets and Treats*. Round the bottom edges and score each paper $\frac{1}{2}$ " from the top horizontally. Arrange in order of the photo.



17. Find tan snowflake paper and cut a 6" x 12" piece. Save leftover for step 37. Score $6\frac{1}{4}$ " from the bottom horizontally, then use a 1" hole punch to make a semi-circle halfway from the score line to the top of the paper. Next, layer and adhere just the $\frac{1}{2}$ " scored sections of the papers from step 16, beginning at the $6\frac{1}{4}$ " score line. Attach a tag sticker to the bottom.

18. Page 1: Take leftover red snowflake paper (B-side) and cut one $6\frac{3}{4}$ " x $8\frac{1}{2}$ ". Fold tan paper to create a flap; the waterfall should be on top. Adhere the top and bottom sides of the flap to the page. Attach "Merry Christmas" sticker with foam adhesive.



19. Cut a piece of chipboard to $6\frac{1}{4}$ " x $8\frac{1}{2}$ ". Adhere the chipboard underneath the red snowflake paper so that the chipboard is flush with the right side of the red paper. If you flip the chipboard over, you should see $\frac{1}{2}$ " of the paper exposed.

20. Find leftover paper from step 14. Cut off two $4\frac{3}{8}$ " squares from *Holiday Cheer* and two $4\frac{3}{4}$ " squares from the red text paper (B-side). Score *Holiday Cheer*

Letters to Santa – Keepsake Album



$\frac{1}{2}$ " from the left and adhere. Cut out "Letters to Santa" from leftover *Letters to Santa* and "Merry Christmas" from leftover *Holly Jolly Express*. Save one photo mat and "Merry Christmas" image for step 39.

21. Adhere the $\frac{1}{2}$ " exposed side of the red snowflake paper onto the front of the first tab in your spine. Open flap. Attach red tag sticker, then attach ticket stickers to the front and back of the *Holiday Cheer* paper, then adhere just the top, left, and bottom sides. Insert "Letters to Santa" image behind semi-circle.



22. Cut green stripe paper (B-side) into two 5" x 12" strips; trim both to 5" x 7", keeping the 5" x 5" squares. Find your second *Letters to Santa* (B-side) and cut two 4 $\frac{1}{2}$ " x 12" strips. Cut into two 4 $\frac{1}{2}$ " x 6 $\frac{1}{2}$ " and two 4 $\frac{1}{2}$ " x 4 $\frac{1}{2}$ ", then score $\frac{1}{2}$ " from the top horizontally. Adhere the scored section. Save a set of mats for steps 40 and 41; attach Santa sticker and two tab stickers.

23. Locate second sheet of *Sweets and Treats* (B-side) and remove 3" x 4" "Letters to Santa", "Have a Holly Jolly", 6" x 4" "He's Making a List," and "Santa's Special Delivery." Attach small tag stickers front and back to the 3" x 4" "Have a Holly Jolly" (B-side). Then fussy cut one red stamp from leftover *Letters to Santa*.



24. Find leftover *North Pole Postage* and cut two 3 $\frac{1}{2}$ " x 12" strips; trim both to 3 $\frac{1}{2}$ " x 8 $\frac{1}{2}$ ". Save one for step 41.



25. Trim *Dear Old Santa Claus* to 11 $\frac{1}{4}$ " x 12". Score vertically at 5 $\frac{1}{4}$ " from the left, then score horizontally at 3 $\frac{1}{2}$ " from the bottom. Cut along the lower left score line to remove the 5 $\frac{1}{4}$ " x 3 $\frac{1}{2}$ " scored section; adhere Santa stamp. Fold the other

scored section up, adhering the left and right sides. Cut green holly border from leftover *Holly Jolly Express* to 6 $\frac{1}{2}$ " long; adhere. Attach large Santa tag sticker.



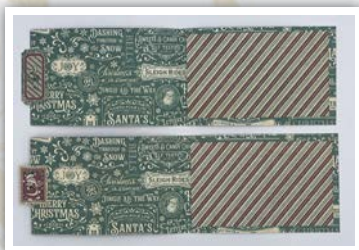
26. Pg 2: Flip paper over, then adhere to the chipboard so that the 5 $\frac{1}{4}$ " score line is flush with the left edge of the chipboard. About 3 $\frac{1}{4}$ " of chipboard and spine may be exposed. Adhere the top, right, and bottom of *North Pole Postage* paper to cover the exposed chipboard and tab. To the left of the score line, attach "Christmas is Coming" sticker. Adhere the left, bottom, and right sides of the 5" x 5" mat. Insert *Sweets and Treats* cards and *Dear Old Santa Claus* paper.

Letters to Santa – Keepsake Album



27. Fold paper along the score line to close the fold-out page. Insert remaining cards and 5" x 7" photo mat into the pocket.

28. Find your leftover *Seasons Greetings* (B-side) paper strips. Trim each to 11" x 3½"; score in half horizontally. Take your second sheet of *Holly Jolly Express* (B-side) and trim off a 12" x 3" strip; cut into two 5" x 3". Save leftover paper for step 31. Center and adhere to the right of the score line; attach ticket and stamp stickers to the front and back far left edge.



29. Find your second sheet of tan snowflake paper (B-side). Cut a 5¼" x 12" strip; trim into two 5¼" x 4¼". Score ½" from the top horizontally on each. Then cut a 5¼" x 7" piece. Cut off green sled border from leftover *Holly Jolly Express*; trim into two 5¼" long pieces. Adhere on top of the scored section.



30. Take a piece of chipboard and trim to 6¼" x 8½". Adhere some green scrap paper to the far right edge; place adhesive on the top and bottom of the chipboard.

31. Cut off a 6¾" x 8½" piece from leftover *Holly Jolly Express* (B-side). Save remaining 5¼" x 8½" for step 35. Punch a semi-circle in the center right side. Adhere the top and bottom to the chipboard.

Adhere just the ½" scored sections of the tan photo mats. Fold

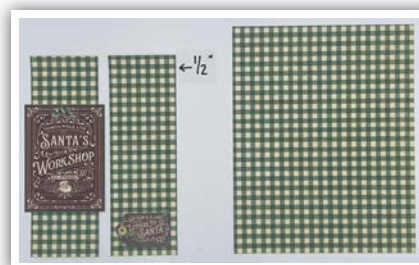
Seasons Greetings papers, then center and adhere to the tan paper. Adhere paper to the second spine tab.



just the ½" scored section to tan 5¼" x 7" piece. Insert behind the semi-circle in page 3.

33. Take your second sheet of green gingham paper and cut a 5¼" x 12" piece. Trim into two 2½" x 7½" pieces. Score ½" from the top horizontally on each. Attach tag sticker on one, then center and adhere

3" x 4" "Santa's Workshop" from *Sweets and Treats*. Trim the remaining 6¾" x 12" piece to 6¾" x 8½".



34. Locate leftover *Holly Jolly Express* (B-side) 5¼" x 9". Cut into two 5¼" x 4¼". Score ½" from the left vertically, save one of these for step 46.

Letters to Santa – Keepsake Album



35. Find your second red text (B-side) paper; cut a 12" x 8½" piece. Score at 3" and 9" vertically. Ad-

here scored section of 5¼" x 4¼" *Holly Jolly Express*. Cut "Holly Jolly" sticker border into two 5¼" pieces; save one for step 46 and attach the other. Attach large ticket sticker; then center and adhere just the ½" scored sections of the green gingham 2½" x 7½" pieces.

36. Page 4: Fold red text paper over along score lines, creating a gatefold. Adhere *Sweet Treats* (B-side) 6" x 4" "Sweets and Candy Canes" to only the left gatefold. Remove small Santa image from left-over *Holly Jolly Express*, along



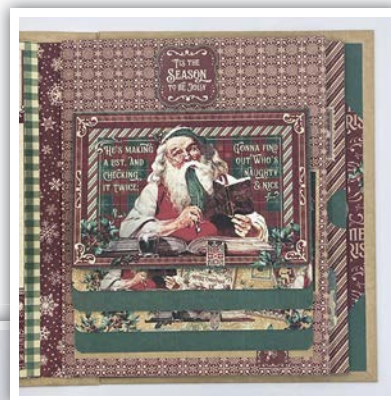
with a green stamp from leftover *Letters From Santa*.

Adhere. Center red gatefold over 6¾" x 8½" green gingham paper, then adhere to the back of page 3.

37. Page 5: Repeat steps 16 & 17 using leftover tan snowflake paper (B-side), *Naughty or Nice*, and green text (B-side). Use *Sweets and Treats* 6" x 4" "He's Making a List" for the top and small red square stickers for the bottom front and back.



38. Repeat steps 18 & 19 using your second sheet of *North Pole Postage* (B-side), "Tis the Season" sticker, and one 6¼" x 8½" chipboard.



39. Repeat step 21 using leftover paper from step 20, along with large green rectangle Santa stickers front and back.



40. Page 6: Repeat step 25 using the second sheet of *Holiday Cheer*, *Sweet Treats* (B-side) 6" x 4" "Wishing You a Merry Christmas" and 3" x 4" Santa with bag. Attach button stickers to the small card. Use



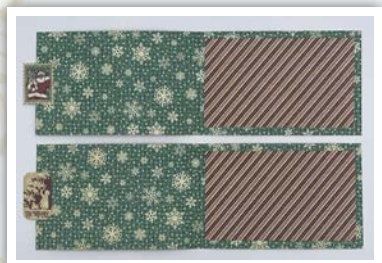
red text border from *Holly Jolly Express*, "Wishing You a Merry Christmas" stamp sticker, and green square stickers for 5" x 7" pull out from step 22. Cut a red stamp from leftover *North Pole Postage*.



41. Repeat steps 26 & 27 using leftover *North Pole Postage* paper and 5" x 5" photo mat. Attach "Jingle All the Way" and round Santa stickers. Use

Letters to Santa – Keepsake Album

Sweets and Treats 3" x 4" "Santa's Workshop," and "Sweets and Candy Canes" (B-side). Adhere red stamp to 5¼" x 3½" *Holiday Cheer*.



page base. Attach stamp and rectangle stickers front and back.

43. Repeat step 29 using your second sheet of red stripe paper (B-side) and green and yellow "Letters to Santa" border from leftover *Holly Jolly Express*.



42. Page 7: Repeat step 28 using your second sheet of *Naughty or Nice* (B-side) and red stripe paper. Use *Naughty or Nice* for the flaps and red stripe paper for the inside photo mats and 6¼" x 8½"

44. Repeat steps 30 through 32 using leftover papers from step 32, leftover red stripe paper (B-side), green scrap paper, a red stamp from leftover *North Pole Postage*, and 6¼" x 8½" chipboard.

45. Page 8: Repeat step 33 using your second sheet of *Dear Old Santa Claus*, 3" x 4" "Letters to Santa" image from

leftover *Sweets and Treats*, and small red tag sticker.



46. Repeat step 35 using your second sheet of green stripe paper (B-side), leftover sticker border, and large red gingham sticker.



47. Repeat step 36, using green stamp and "Santa's Workshop" from leftover *Letters to Santa*, along with leftover *Sweets and Treats* (B-side) 6" x 4" "Wishing You a Merry Christmas."

And that's a wrap! You've completed the Letters to Santa Keepsake Album!



Shown above with the Letters to Santa Treat Box Set (Vol10-23 Card Set - sold separately)